



For more than 100 years, we've created smarter workplaces that solve customers' business issues. We bring together the best strategies, products and services that help people work more effectively, today and tomorrow.



As a part of The Center for Health Design's Pebble Project, the Dublin Methodist Hospital needed to **create a high-design healthcare facility**.

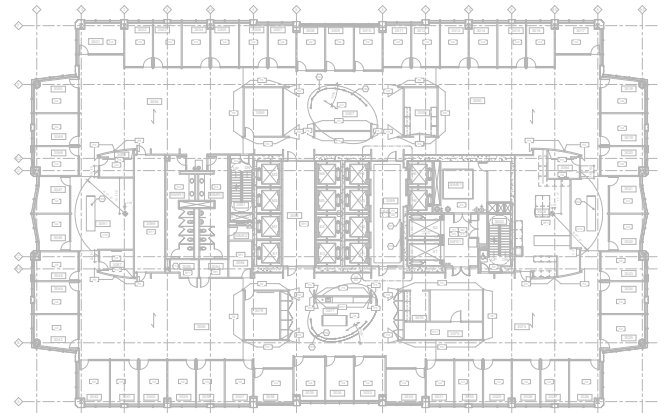
Challenge:

- **unique needs:** find existing products to meet project needs
- **first impressions:** give the hospital a clean, comfortable feel
- **patient care:** promote higher quality of care for patients
- **improve on client's strengths:** enhance operational efficiency and productivity

Solution:

- **patient-specific:** ensure every patient room has custom-designed furniture
- **consultation / conversation:** provided a variety of open and private settings
- **a range of work areas:** provided appropriate spaces that support hospital staff
- **product solutions:** utilized high-quality furniture for the waiting and lounge areas
- **ergonomic seating:** outfitted the entire facility with ergonomic, environmentally friendly Steelcase Think chairs

LOTH
has
worked
to
become a
true partner
with
healthcare
providers



Result:

- **collaborative interaction:** environment supports staff and patients and their interactions
- **attract & retain:** able to help the hospital attract quality staff
- **functional space:** provides each team member with an appropriate and functional workspace
- **community support:** space helps drive business as well as community support
- **welcoming space:** created an environment that attracts patients

“With this huge new facility, my team and the Dublin Methodist facilities manager were spread far too thin to handle furniture installation. Kristi and her team at LOTH customized Nemschoff furniture systems, laid out all patient rooms, and provided mock-up samples so we could see exactly what we were getting. And, they were on-site to ensure everything was received in good condition, which doesn’t always fall within dealership scope.”

- Char Davis
Interior Designer
Karlsberger Companies

LOTH
provides
solutions
for major
changes



www.lothinc.com

3574 E. Kemper Road
Cincinnati, Ohio 45241
513.554.4900

855 Grandview Avenue
Columbus, Ohio 43215
614.487.4000

