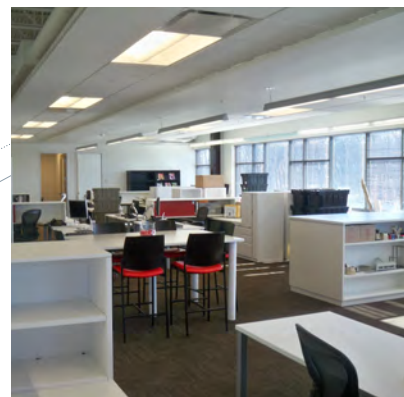




For more than 100 years, we've created smarter workplaces that solve customers' business issues. We bring together the best strategies, products and services that help people work more effectively, today and tomorrow.



The Limited headquarters in Columbus sought LOTH's expertise when moving from a building they occupied for more than 20 years into a newly constructed space.

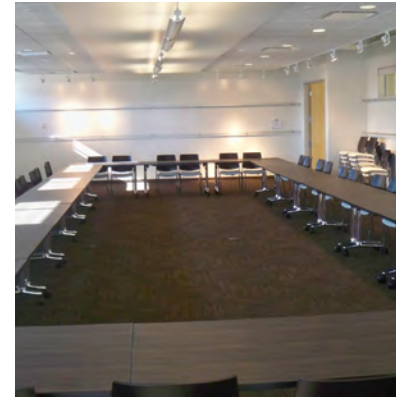
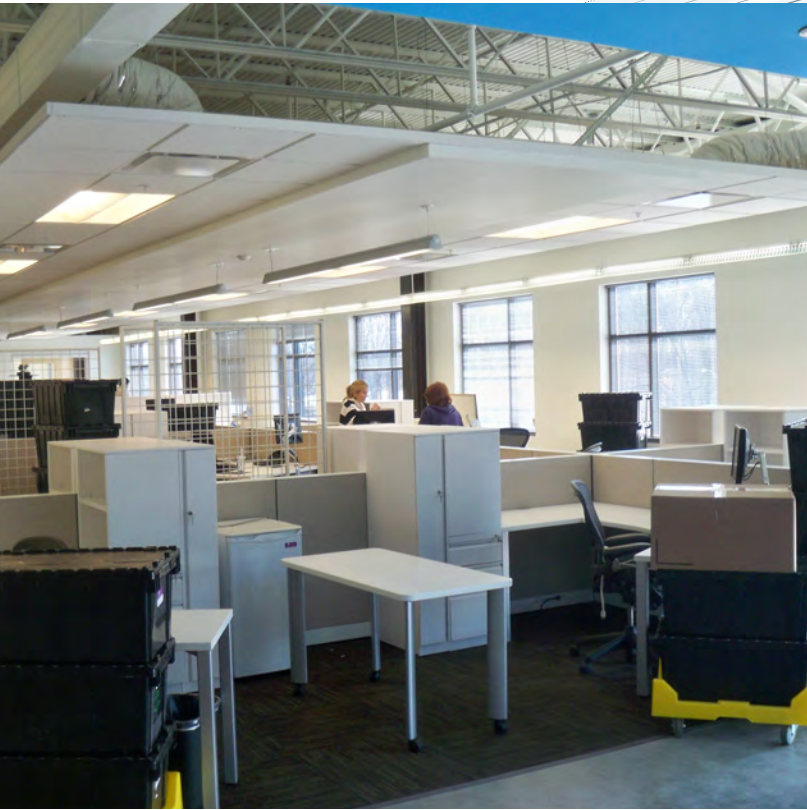
Challenge:

- **design the new space:** coordinate space design and procurement of new furniture
- **pack & go:** move services for 176 employees
- **project problems:** building construction behind schedule
- **short schedule:** compressed installation and move timeline

Strategy:

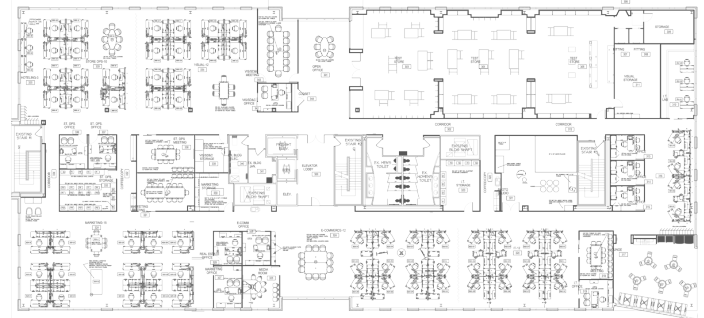
- **coordinate the relocation:** extensive pre-move planning and purge sessions
- **determine collaboration needs:** analyze how groups interact with other departments and what constitutes collaboration among teams
- **functional workspace:** provide each team member with an appropriate and functional workspace
- **address specific creative needs:** areas for individual and team creativity

LOTH
provides
workspace
solutions
for major
changes



Solution:

- **create neighborhood zones:** established neighborhood zones to create purposeful adjacencies
- **included multiple settings:** provided a variety of open and enclosed settings
- **wayfinding:** signage identified each department and employee space on move day
- **individual spaces:** over ten typical desk layouts plus private offices
- **pre-move activities:** seven dedicated purge days contributed to the efficiency



Result:

- **collaborative interaction:** environment supports collaborative interaction within an open-plan setting
- **expeditious relocation:** employees were able to move over the weekend and were up and running on Monday
- **employee specific:** provides each team member with an appropriate and functional workspace
- **successful installation:** over 150 workstations, 25 private offices and 24 sliding glass doors on wall product

