



biergarten



biergarten
by LUMINAUT



bier garten

by LUMINAUT



biergarten

The biergarten table is a multi-functional centerpiece for both events and everyday life that draws inspiration from classic “live edge” tables.

The live edge influence came in 3 ways. First, this table does feature a beautiful walnut live edge all the way around the perimeter of the apron. Second, the core of the table top is a lush planter box system that fosters living plants. And lastly, the top is “alive” in that it transforms based on the users needs—going from planter to a beverage center with a simple swap.

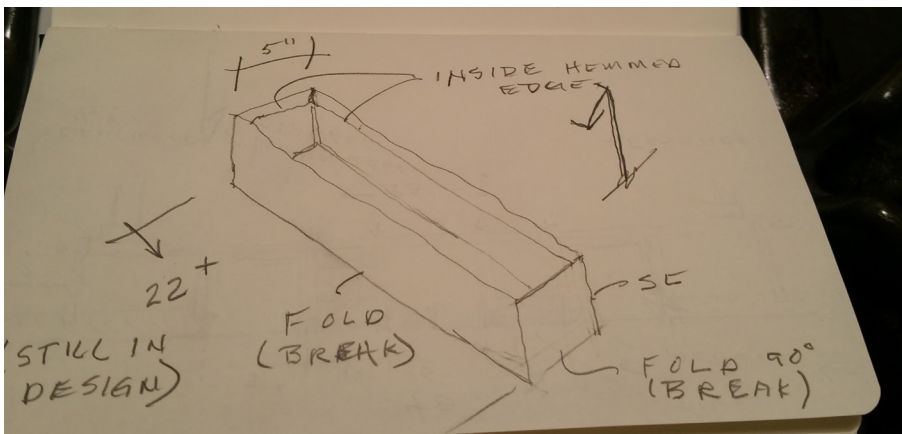
Designed for 24/7 use, the biergarten table also features solid surface terrazzo-look insets, perfect for resting a drink and protecting the surface while watering the plants. The 6” walnut perimeter gives users ample space to play cards, enjoy a snack, or prop their feet up.

Let's gather at the biergarten.

to build a biergarten



Planning out the biergarten took quite a bit of time—we had to make sure it was sturdy enough to support the weight of the walnut top and planter boxes but not too heavy for the base. We also had to design an inner core that kept the planter boxes and solid surface inserts in place without being seen.



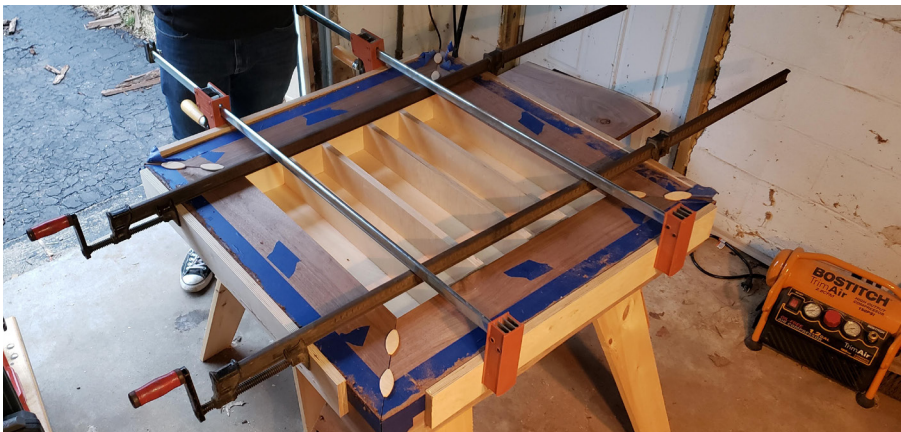
We started the design process with the planter boxes. Using 24" long planters, we then determined how to build the "pocket" that they fit into.



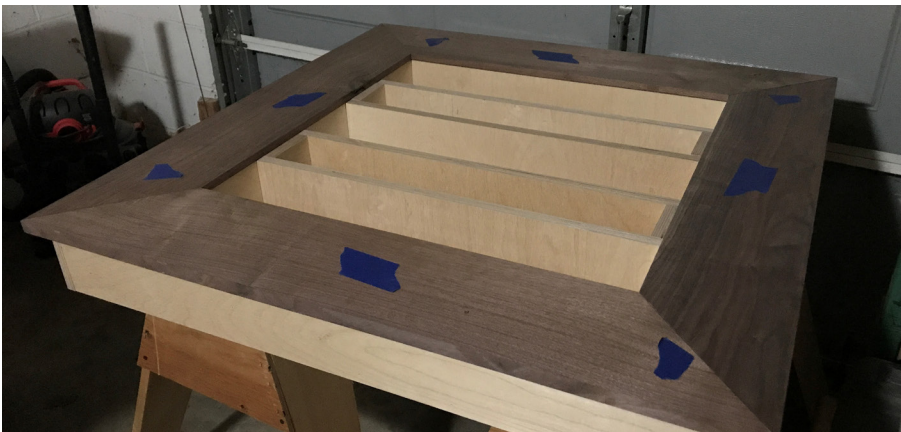
From there, we moved onto the rest of the frame and support for the walnut top and solid surface insets.



After each addition to the frame we made sure to test the planters. If they still fit, we were good to charge ahead!



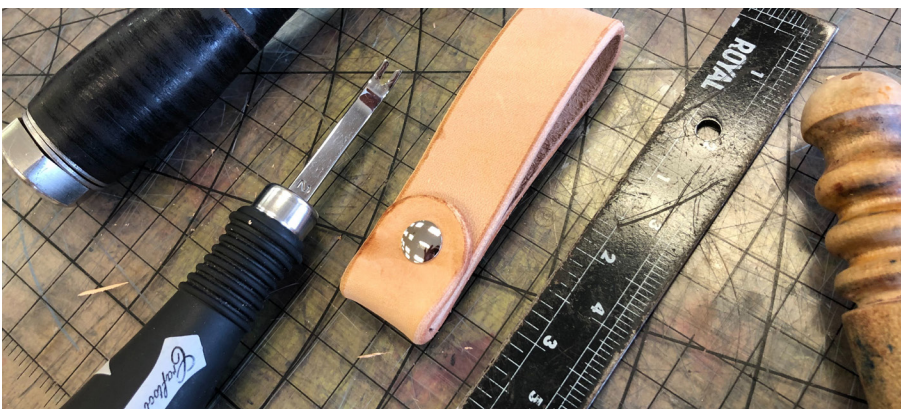
The walnut top had to be measured (and re-measured) meticulously as we only had a few slabs to work with. Making sure the corners lined up as well as the apron "live edge" was extremely important.



The raw walnut slab looks beautiful unfinished, but it especially shines with a coat of linseed oil to bring out it's naturally rich color. (Shown here, pre-oil)



Our team was made up of a variety of skilled craftsman, including one who works with leather. He designed and made the leather finger pulls for the planter and cooler boxes.



Voila! The finished product is clean, minimal, and user-friendly. A successful form meets function design.



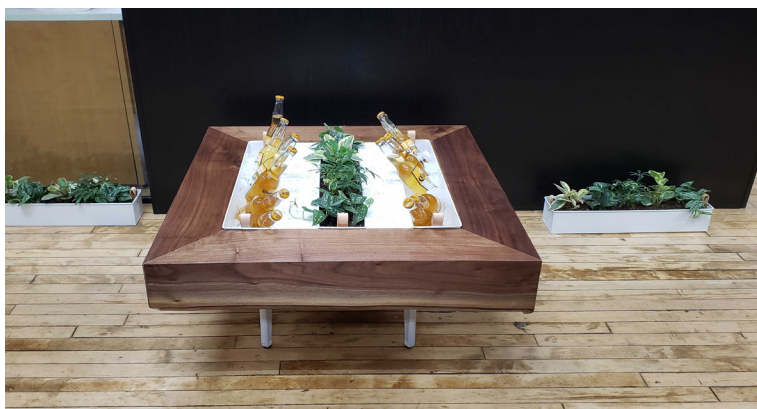
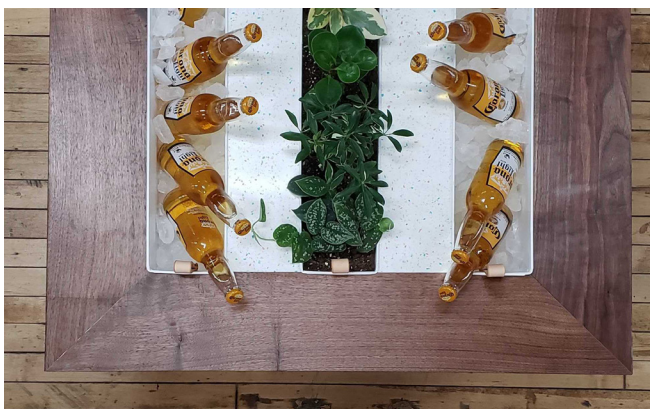
The planter boxes were painted and filled with a variety of low-maintenance house plants, meaning this table can be enjoyed by those with and without a green thumb.



The result: 3 lush planters that will continue to flourish and bring a burst of color and life to any space.



The finished product is both a show piece and a workhorse. Shown in it's lushest form (left) and party mode (below), it transforms for all occasions and stays stylish the whole time.



biergarten



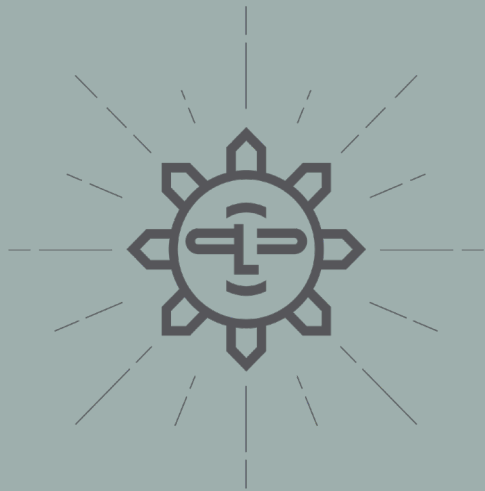
We could not be happier with how it turned out. The craftsmanship and attention to detail that went into designing and building this piece shine through and in the end we have a table that not only looks wonderful but functions just as well.

A special thanks goes to Geig Farms for the beautiful walnut slabs, Formica for the modern and durable terrazzo-look solid surface, A J Rahn for the perfect house plants, and Brett Paguirigan for letting us into his shop and leading the build.

And the team: Maddie Baker, Lance Brannock, Molly Kerth, Mark Demko, Brett Paguirigan, Mia Balzano, Es Maksoud, Aimee Atilano, Olivia Fentress, and Katie Barrat



We create inspired spaces and illuminated experiences. We excel in *architecture* that's determined to be unique, and *interior design* that excites with elements and touches we can personally *source* to create a consistent feel throughout. We work closely with our clients to create structures that are *sustainable*, and ones that can respect and revive the *historic*.



Thank You!