



STILL FABULOUS
40th
Anniversary



Steelcase
Authorized Dealer



COLUMBUS
CEO

Project:
Grand Central
Mall

**WASHINGTON
PRIME GROUP®**

grand central mall | considerations

\$200K Budget

Vienna, West Virginia

15 soft seating areas



grand central mall | location settings

setting 1 (ABC)

setting 2

setting 3

setting 4

setting 5



grand central mall | color palette



grand central mall | setting 1-A | qty 1



**NOTE ON SEAT HEIGHTS WITH
TABLE HEIGHTS REGARDING
LOUNGE AND CAFÉ CHAIR
MIXTURE:**

30"H enea table + 18.75" seat
height for slope

40"H big table + 29.5" seat height
for slope stool

setting 1-A:
1 large lounge setting
1 small lounge setting
4 café and table sets

- setting 1 (ABC)
- setting 2
- setting 3
- setting 4
- setting 5

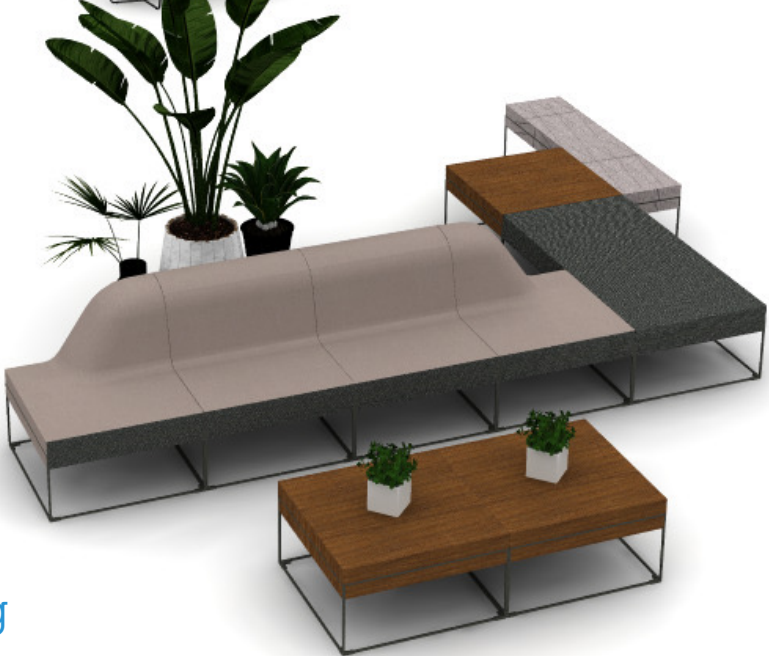




setting 1-B:
1 small lounge setting

- setting 1 (ABC)
- setting 2
- setting 3
- setting 4
- setting 5





NOTE ON SEAT HEIGHTS WITH
TABLE HEIGHTS REGARDING
LOUNGE AND CAFÉ CHAIR
MIXTURE:
30"H enea table + 18.75" seat
height for slope
40"H big table + 29.5" seat height
for slope stool

setting 1-A:
1 large lounge setting
3 café and table sets

- setting 1 (ABC)
- setting 2
- setting 3
- setting 4
- setting 5





- setting 1 (ABC)
- setting 2
- setting 3
- setting 4
- setting 5





- setting 1 (ABC)
- setting 2
- setting 3
- setting 4
- setting 5





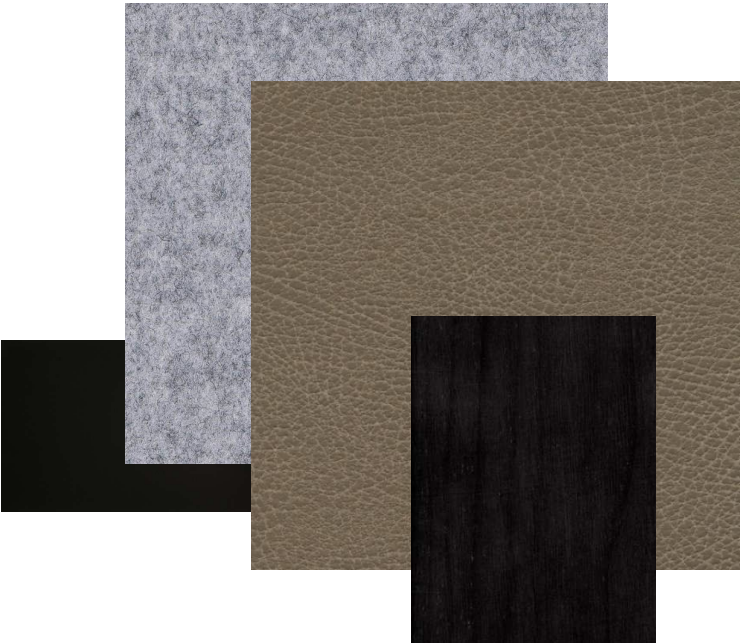
- setting 1 (ABC)
- setting 2
- setting 3
- setting 4
- setting 5



NOTE ON SEAT HEIGHTS WITH TABLE HEIGHTS REGARDING LOUNGE AND CAFÉ CHAIR MIXTURE:
30"H enea table + 18.75" seat height for slope
40"H big table + 29.5" seat height for slope stool



- setting 1 (ABC)
- setting 2
- setting 3
- setting 4
- setting 5



grand central mall | fabric and finish palette | care cleaning instructions



legs
onyx

100% Polyester (Antimony Free Yarn). Mix 1-part clear dish detergent and 16 parts water in a spray bottle.
Spray soft surface lightly and evenly until damp. The spray should coat the surface but not soak through. Let sit for 1-2 minutes.
Use a wet/dry vacuum (such as a Shop Vac) to remove all moisture from the surface.
Allow to air dry until completely dry.
[Link](#)



frame
midnight metallic

100% Polyester (Antimony Free Yarn). Mix 1-part clear dish detergent and 16 parts water in a spray bottle.
Spray soft surface lightly and evenly until damp. The spray should coat the surface but not soak through. Let sit for 1-2 minutes.
Use a wet/dry vacuum (such as a Shop Vac) to remove all moisture from the surface.
Allow to air dry until completely dry.
[Link](#)



legs
obsidian

100% Polyester (Antimony Free Yarn). Mix 1-part clear dish detergent and 16 parts water in a spray bottle.
Spray soft surface lightly and evenly until damp. The spray should coat the surface but not soak through. Let sit for 1-2 minutes.
Use a wet/dry vacuum (such as a Shop Vac) to remove all moisture from the surface.
Allow to air dry until completely dry.
[Link](#)



modesty laminate
vanadium fiber

1. Use one of the 5 cleaners listed below.
2. Spray hard surfaces lightly and evenly.
3. Wipe dry.

- Lysol Disinfecting Wipes
- Formula 409 Disinfecting Spray
- Clorox Non-Bleach Disinfecting Wipes
- Lysol All Purpose Spray Cleaner
- Fantastik All Purpose Spray Cleaner

[Link](#)

grand central mall | fabric and finish palette | care cleaning instructions

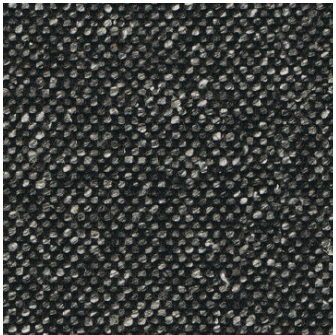
stool fabric
tiny herringbone medium gray



19% Rayon, 81% Polyester
Finish
[Stain Repellent](#)
Cleaning
[Water-based/Solvent \(WS\)](#)

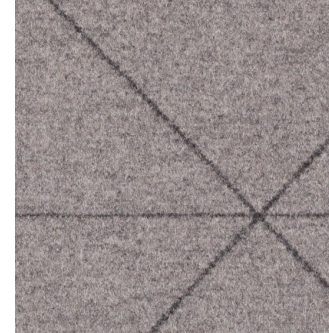
[Link](#)

umami fabric
silk cauldron



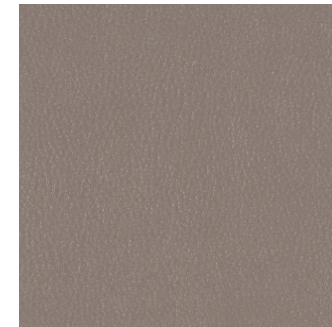
11% Silk, 22% Flax, 67% Wool
Mix together 1-part clear dish detergent and 16 parts water in a spray bottle.
2.Spray surfaces lightly and evenly until damp. (For fabrics, the spray should be enough to coat the surface but not soak through.)
3.Let sit for 1-2 minutes.
4.For hard surfaces, wipe dry.
For soft surfaces, use a wet/dry vacuum (such as a Shop Vac) to remove all moisture from the surface.
5.Allow to air dry until completely dry.
[Link](#)

umami fabric
bixby macro overcast



20% Nylon (Solution Dyed), 80% Wool
Cleaning
[Solvent \(S\)](#)
[Link](#)

umami fabric
silicon element alloy



FACE:100%Polyurethane
BACK:65%Polyester 35%Cotton
•Brush off loose dirt.
•Hose down.
•Prepare a cleaning solution of water and mild soap such as Woolite® or Dawn® dishwashing liquid.
•Use a sponge to clean.
•Allow cleaning solution to soak into the fabric.
•Rinse thoroughly until all soap residue is removed.
•Air dry.
[Link](#)

grand central mall | fabric and finish palette | care cleaning instructions

heya seat fabric
brisa moccasin



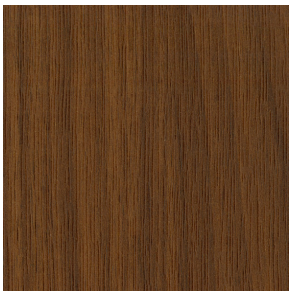
Wipe up spills as soon as they occur •
Clean with soap and water • Sanitize using
disinfectants such as (1:5) bleach/water
solution • For stubborn stains, wipe off
with isopropyl alcohol as soon as possible*
• Thoroughly rinse all solution residue with
clean water • Air dry
[Link](#)

heya surround
blazer silverdale



Dust exposed wood parts frequently using a soft, damp, clean cloth, wiping with the grain. • To clean wood, use a glass cleaner formulated with ammonia. Apply a small amount to a soft dry cloth and wipe in the direction of the grain. Dry with a soft cloth. Do not use furniture polish containing oil or silicone. • To clean leather and vinyl upholstery, use a warm, damp cloth to restore a bright finish. For stubborn stains, use a moisturizing soap. Remove lather with a damp cloth, but do not rinse. Buff with a dry cloth. • For fabric upholstery, use a damp cloth to wipe up spills. For tougher stains, contact your local OFS Brands dealer for cleaning instructions. • Avoid prolonged exposure to direct sunlight, high humidity, extreme heat or cold, and moisture. • The components of your OFS chair, such as controls, casters, and understructure, require “common sense” care and cleaning as necessary.
[Link](#)

coffee table laminate
walnut heights



Avoid prolonged exposure to direct sunlight, high humidity, extreme heat or cold, and moisture. • Dust frequently with a soft, damp, clean cloth or mild detergent solution. Avoid using chemical or abrasive cleaning compounds. • To avoid build up of cleaning agents, rinse the laminate surface with warm water and wipe with a clean damp cloth.
[Link](#)

heya console
ebony veneer



Avoid prolonged exposure to direct sunlight, high humidity, extreme heat or cold, and moisture. • Dust frequently with a soft, damp, clean cloth or mild detergent solution. Avoid using chemical or abrasive cleaning compounds. • To avoid build up of cleaning agents, rinse the laminate surface with warm water and wipe with a clean damp cloth.
[Link](#)

thank you

LOTH

Grandview Work Studio
855 Grandview Ave.
Columbus, OH 43215
www.lothinc.com

Julie Voss

Leader, Emerging Workplaces
c. 614.582.2997
e. jvoss@lothinc.com

Lorene Haimerl

Executive Vice President, Sales
c. 614.425.8805
o. 614.487.4143
e. lhaimerl@lothinc.com

Amber Blair

Workplace Advisor
c. 419.236.9879
e. ablair@lothinc.com