



LOT

Steelcase
Authorized Dealer

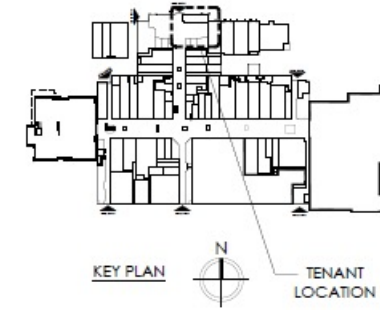
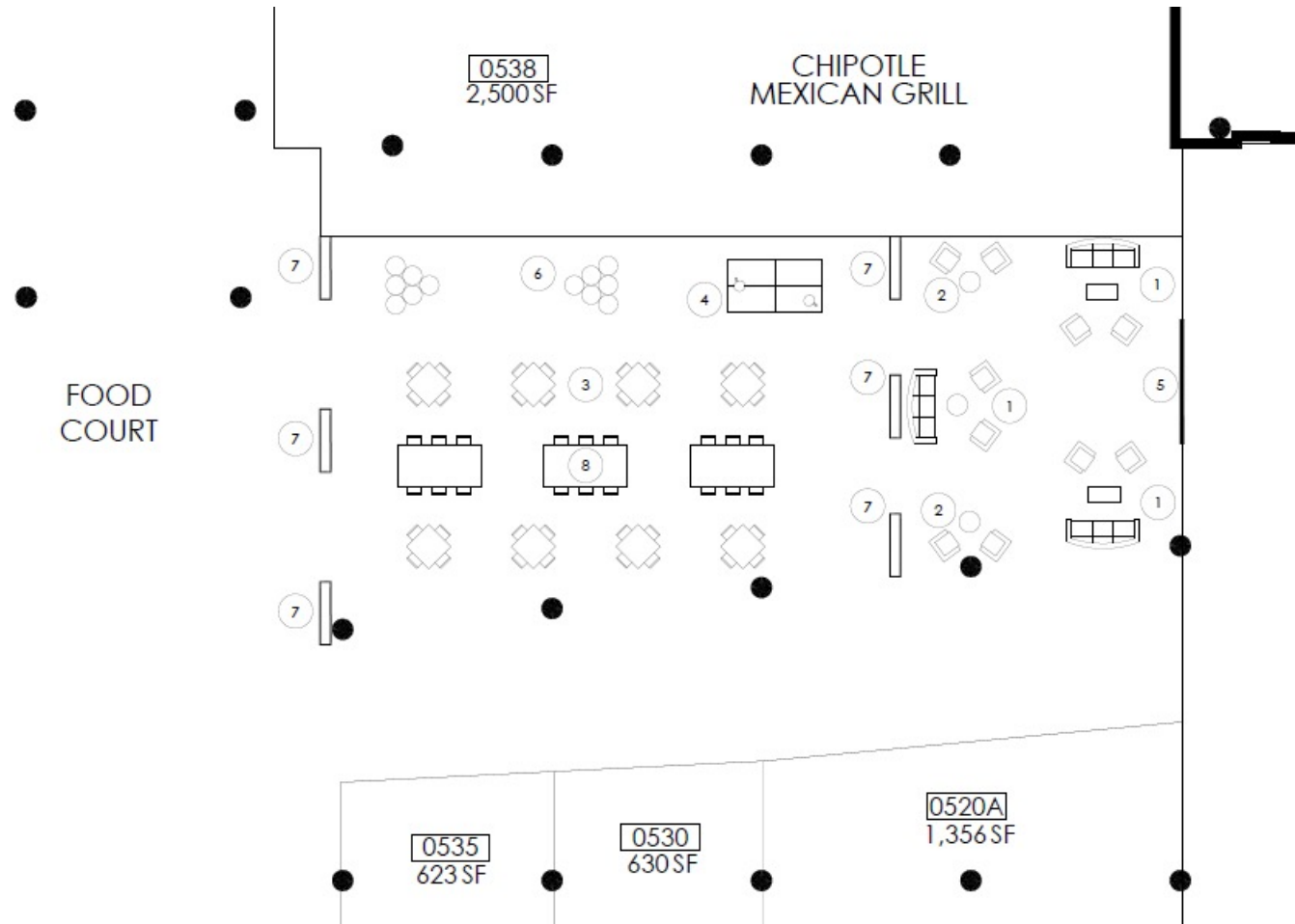
**TOP
WORK
PLACES
2019**

**COLUMBUS
CEO**

Project:
Lindale Mall
Food Hall

**WASHINGTON
PRIME GROUP®**

LINDALE MALL | FOOD HALL | PROPOSED PLAN

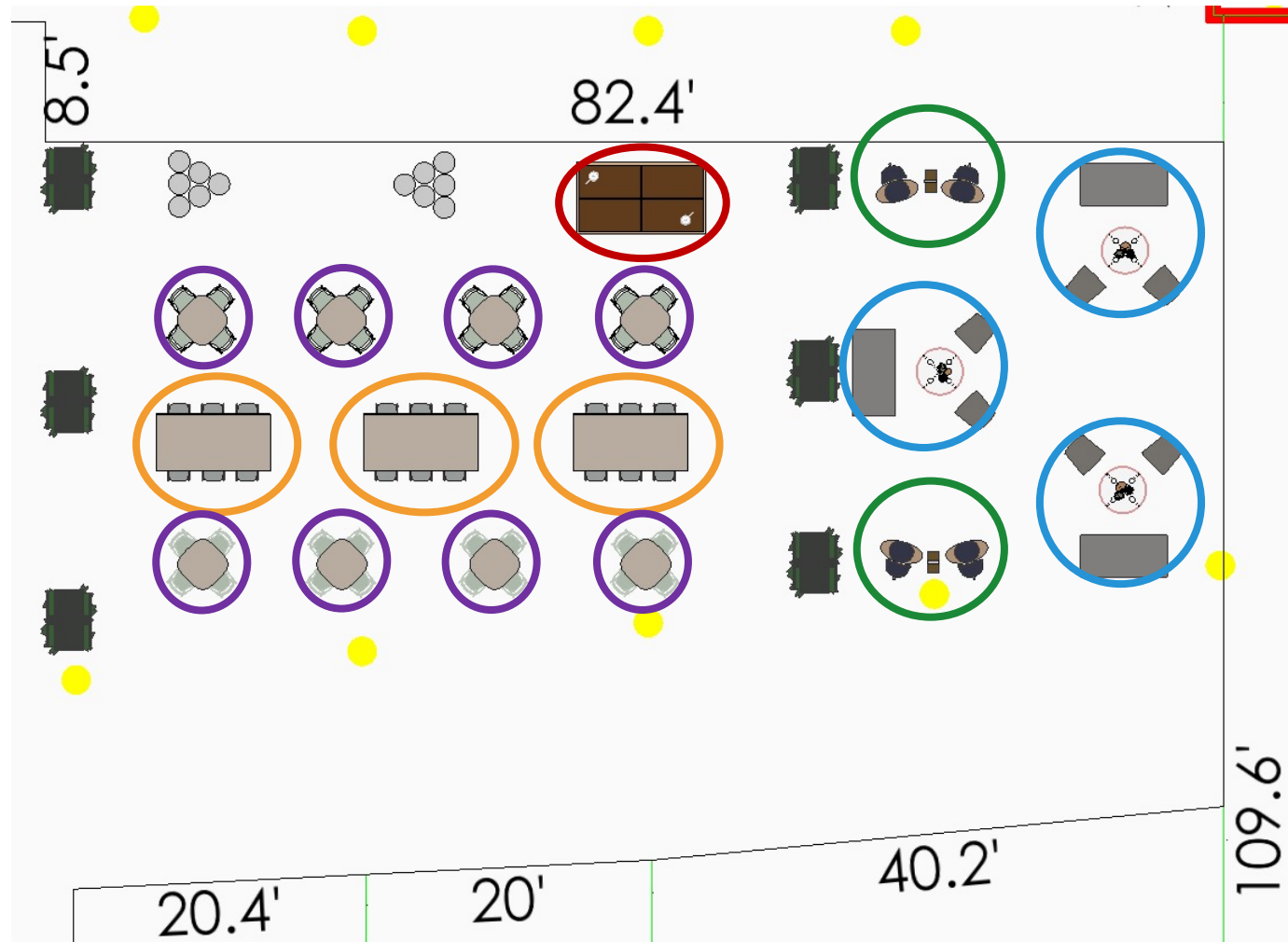


CODED NOTES:

- 1 SOFT SEATING GROUP 1
- 2 SOFT SEATING GROUP 2
- 3 DINING TABLE - SEATS 4
- 4 TABLE TENNIS
- 5 PROJECTOR AND SCREEN
- 6 YARD PONG
- 7 6' HEDGE
- 8 WATERFALL TABLE - SEATS 6

LINDALE MALL | FOOD HALL | LOTH PLAN

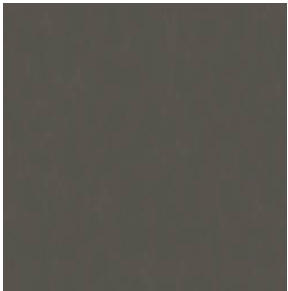
- SETTING 1
LOUNGE (3)
- SETTING 2
LOUNGE (2)
- SETTING 3
CAFE (3)
- SETTING 4
CAFE (8)
- TABLE TENNIS (1)



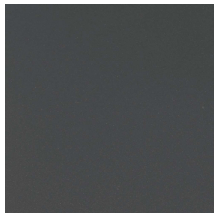
LINDALE MALL | FOOD HALL | setting 1 lounge area



fog leather



steel base



upholstery fabric



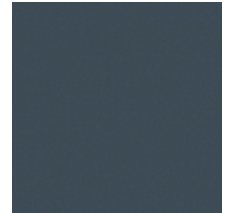
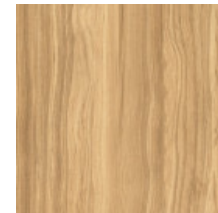
plinth base



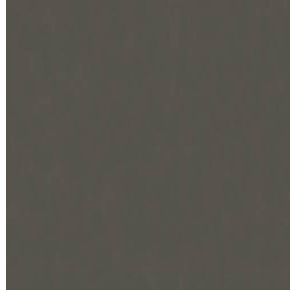
table top



plastic edge and base

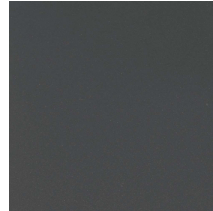


LINDALE MALL | FOOD HALL | setting 1 lounge area | cleaning care instructions

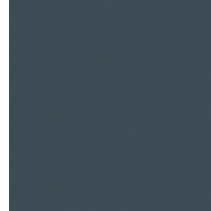


fog leather

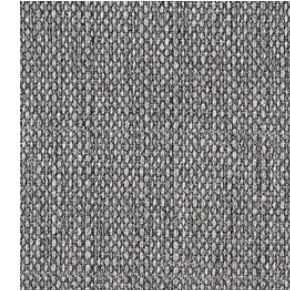
100% Polyurethane
(Polycarbonate Based)
Wipe with a soft cloth.
Apply conditioner once
or twice a year. Do not
use shoe polish.
[Link](#)



steel base

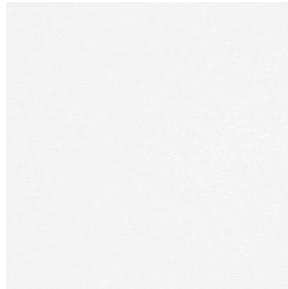


1. Use one of the 5 cleaners
listed below.
2. Spray hard surfaces lightly and
evenly.
3. Wipe dry.
• Lysol Disinfecting Wipes
• Formula 409 Disinfecting Spray
• Clorox Non-Bleach Disinfecting
Wipes
• Lysol All Purpose Spray Cleaner
• Fantastik All Purpose Spray
Cleaner
[Link](#)



upholstery fabric

100% Polyester
Finish
[Water Repellent](#)
[Waterbased/Solvent \(WS\)](#)
[Link](#)

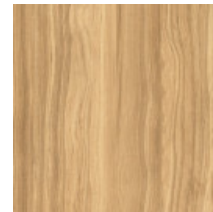


Artic white

1. Use one of the 5 cleaners
listed below.
2. Spray hard surfaces lightly
and evenly.
3. Wipe dry.
• Lysol Disinfecting Wipes
• Formula 409 Disinfecting Spray
• Clorox Non-Bleach Disinfecting
Wipes
• Lysol All Purpose Spray
Cleaner
• Fantastik All Purpose Spray
Cleaner
[Link](#)



laminate



1. Use one of the 5 cleaners listed below.
2. Spray hard surfaces lightly and evenly.
3. Wipe dry.
• Lysol Disinfecting Wipes
• Formula 409 Disinfecting Spray
• Clorox Non-Bleach Disinfecting Wipes
• Lysol All Purpose Spray Cleaner
• Fantastik All Purpose Spray Cleaner
[Link](#)

LINDALE MALL | FOOD HALL | setting 1 lounge area



LINDALE MALL | FOOD HALL | setting 2 lounge area



seat fabric



chair frame

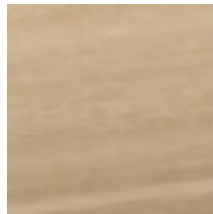


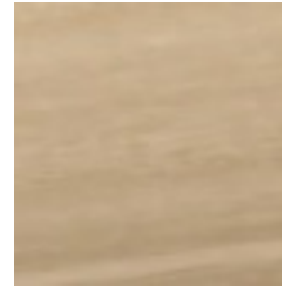
table finish as shown
marine blue

LINDALE MALL | FOOD HALL | setting 2 lounge area | cleaning care instructions



[Link](#)

seat fabric



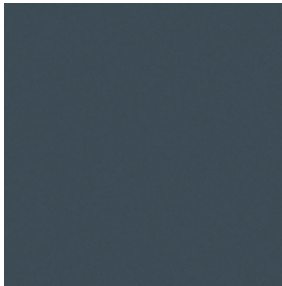
chair frame

1. Use one of the 5 cleaners listed below.
2. Spray hard surfaces lightly and evenly.
3. Wipe dry.

- Lysol Disinfecting Wipes
- Formula 409 Disinfecting Spray
- Clorox Non-Bleach Disinfecting Wipes
- Lysol All Purpose Spray Cleaner
- Fantastik All Purpose Spray Cleaner
- [Link](#)



paint



1. Use one of the 5 cleaners listed below.
2. Spray hard surfaces lightly and evenly.
3. Wipe dry.

- Lysol Disinfecting Wipes
- Formula 409 Disinfecting Spray
- Clorox Non-Bleach Disinfecting Wipes
- Lysol All Purpose Spray Cleaner
- Fantastik All Purpose Spray Cleaner
- [Link](#)



laminate

1. Use one of the 5 cleaners listed below.
2. Spray hard surfaces lightly and evenly.
3. Wipe dry.

- Lysol Disinfecting Wipes
- Formula 409 Disinfecting Spray
- Clorox Non-Bleach Disinfecting Wipes
- Lysol All Purpose Spray Cleaner
- Fantastik All Purpose Spray Cleaner
- [Link](#)

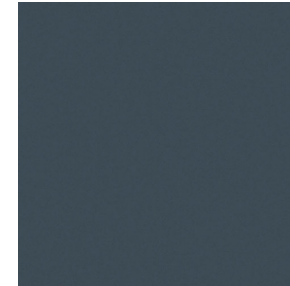
LINDALE MALL | FOOD HALL | setting 3 café area



laminate



seat



base

LINDALE MALL | FOOD HALL | setting 4 café area



Square Conference Table 30"H

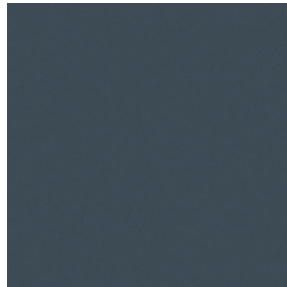
30"W x 30"D

36"W x 36"D

42"W x 42"D



top



base



LINDALE MALL | FOOD HALL | example rendering

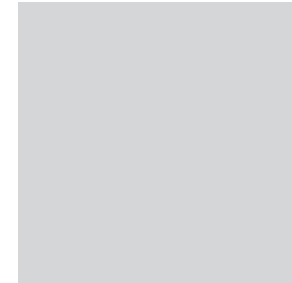


*CHAIRS SHOWN WITH CAFÉ TABLES ARE JUST A REPRESENTATION OF THE CHAIRS FROM SLIDE 7

LINDALE MALL | FOOD HALL | table tennis



includes net, paddles and ball set



top finish w/ knife edge



Knife Edge



base finish

thank you

LOTH

Grandview Work Studio
855 Grandview Ave.
Columbus, OH 43215
www.lothinc.com

Julie Voss

Workplace Consultant
c. 614.582.2997
e. jvoss@lothinc.com

Lorene Haimerl

Executive Vice President, Sales
c. 614.425.8805
o. 614.487.4143
e. lhaimerl@lothinc.com

Amber Blair

Workplace Advisor
c. 419.236.9879
e. ablair@lothinc.com