



LOTH

Steelcase
Authorized Dealer

**TOP
WORK
PLACES
2019**

**COLUMBUS
CEO**

Project:
Northwoods
Mall

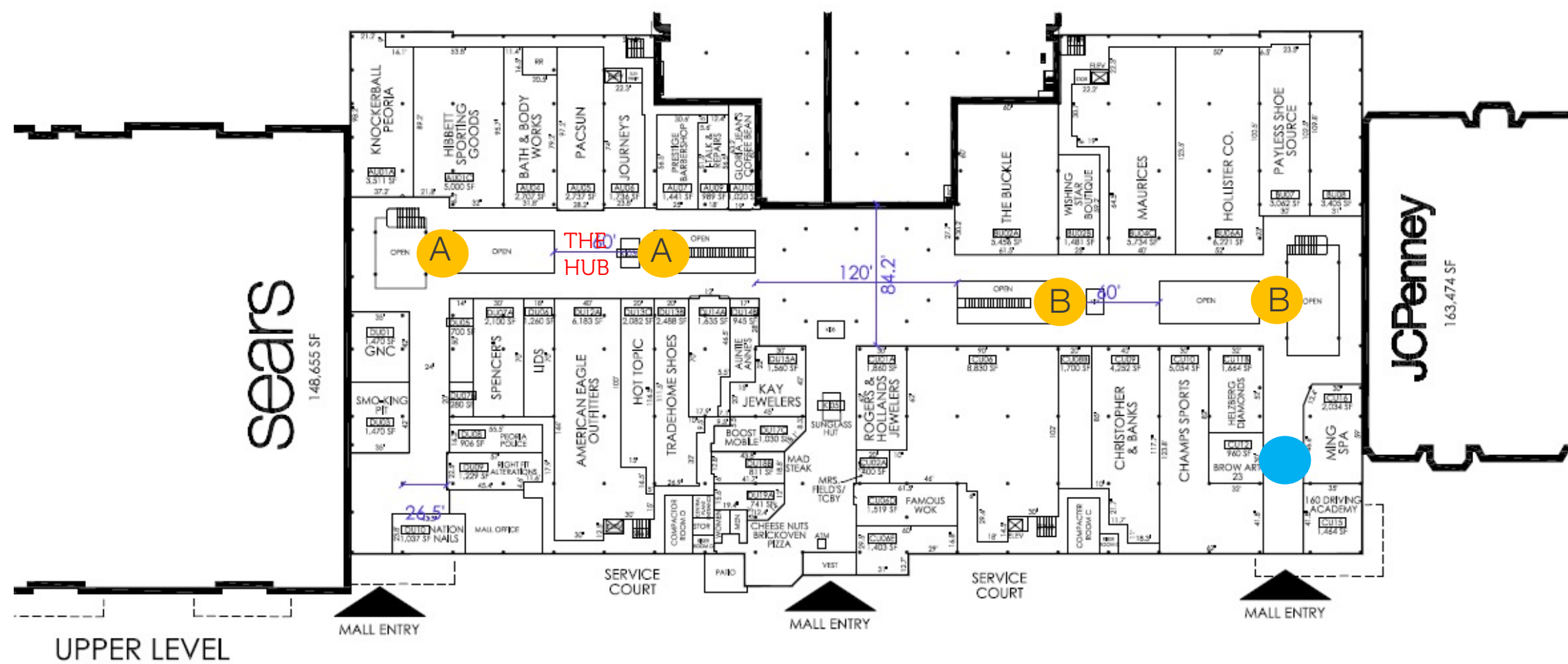
**WASHINGTON
PRIME GROUP®**

northwoods mall | considerations

- Peoria, Illinois
- \$100K budget
- Utilize budget to furnish soft seating throughout mall, no longer just in the central area
- We will not specify waster receptacles as this time

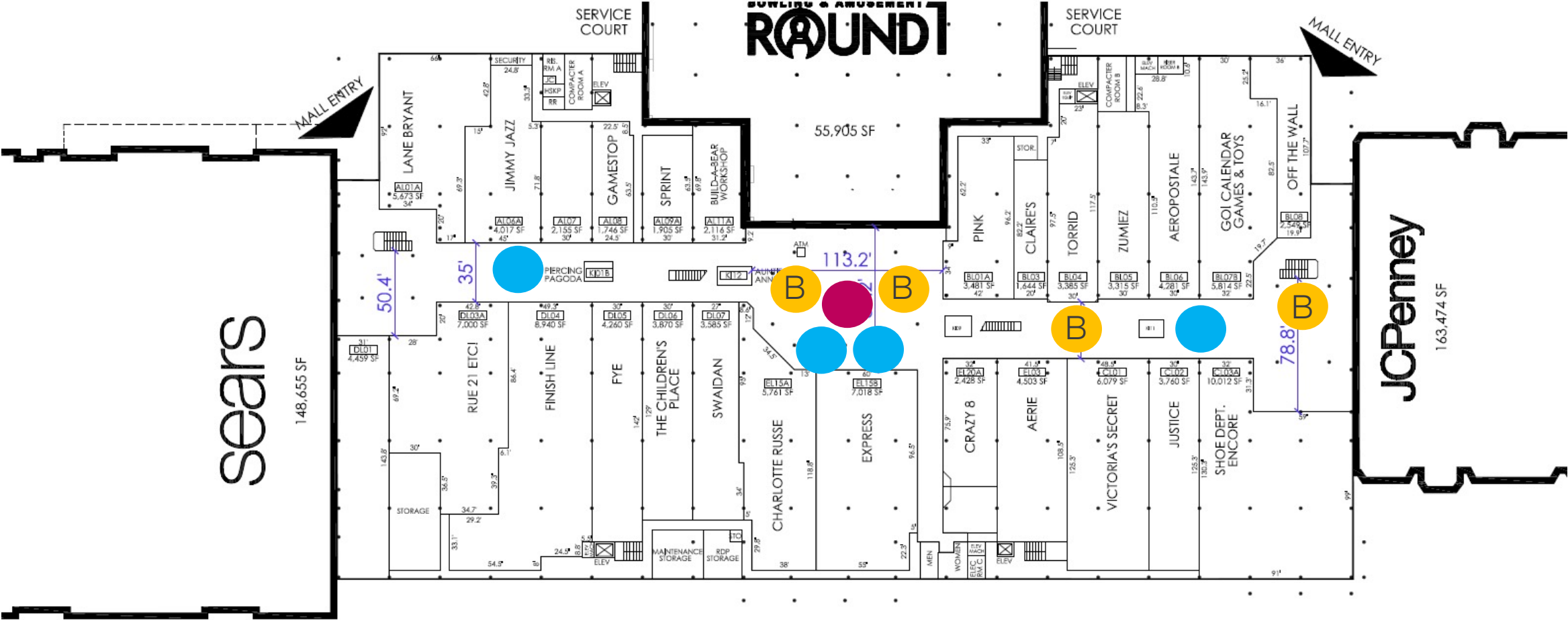


northwoods mall | upper level | setting location



- setting 1 (A and B)
- setting 2
- setting 3

northwoods mall | lower level | setting location



LOWER LEVEL

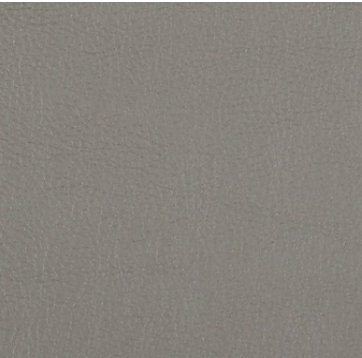
- setting 1 (A and B)
- setting 2
- setting 3

northwoods mall | center court overview

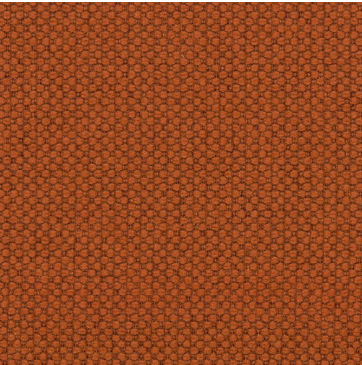




chair seat and back
lariat - pebble



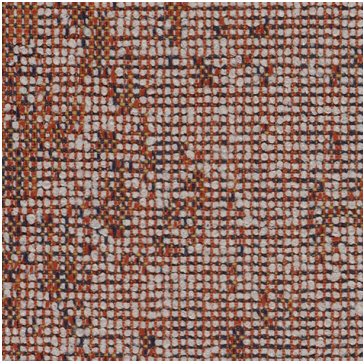
chair back
merit - brass



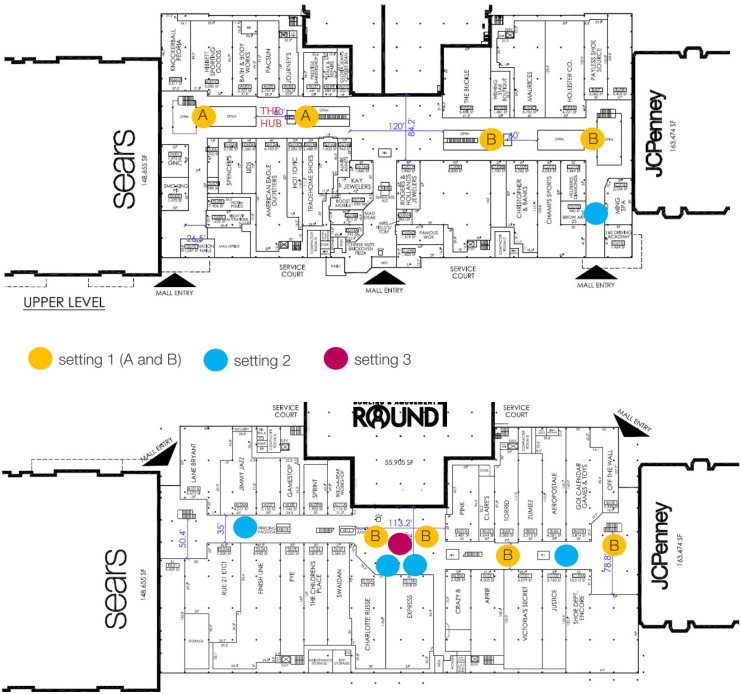
chair base
onyx



ottoman side fabric
memory - 236



ottoman top fabric
brisa distressed - stormy

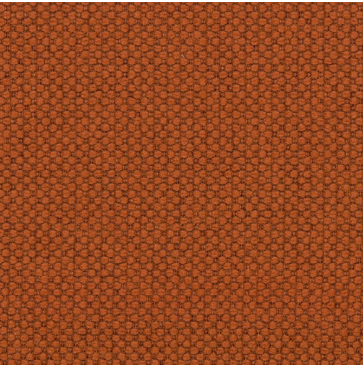




chair seat and back
lariat - pebble



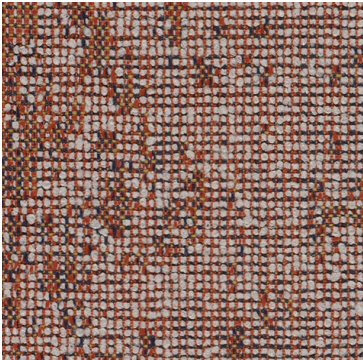
chair back
merit - brass



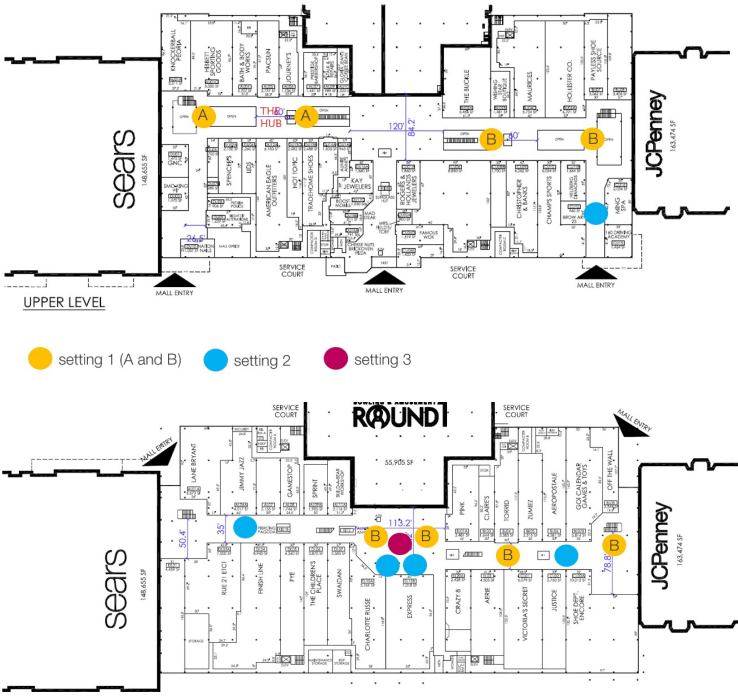
chair base
onyx



ottoman side fabric
memory - 236

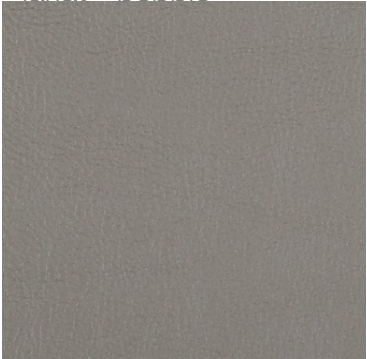


ottoman top fabric
brisa distressed - stormy



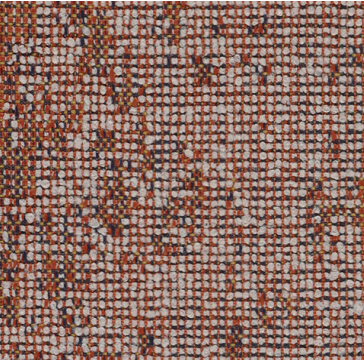
chair seat and back
lariat - pebble

Vinyl
To clean leather and vinyl upholstery, use a warm, damp cloth to restore a bright finish. For stubborn stains, use a moisturizing soap. Remove lather with a damp cloth, but do not rinse. Buff with a dry cloth. •
[Link](#)



ottoman side fabric
memory - 236

S-Clean with mild, water-free dry-cleaning solvent.
[Link](#)



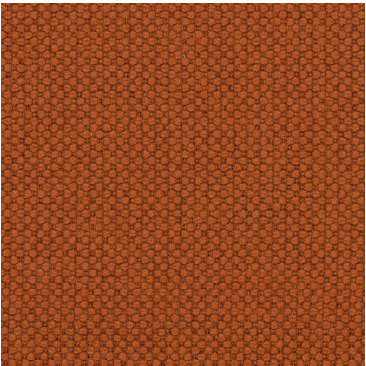
ottoman top fabric
brisa distressed - stormy

1. clean with soap and water.
 2. Sanitize using (1:5) bleach/water solution or other approved disinfectants.
 3. For stubborn stains, wipe off with isopropyl alcohol as soon as possible.
 4. Thoroughly rinse all solution residue with clean water.
 5. Air dry.
- [Link](#)



chair back
merit - brass

76% Post-Consumer Recycled Polyester, 24% Polyester
W/S-Clean with water-based cleanser or mild, water-free dry-cleaning solvent.
[Link](#)



chair base
onyx



stool base
low gloss black



Bleach Cleanable, Greenguard Certified). Mix 1-part clear dish detergent and 16 parts water in a spray bottle. Spray soft surface lightly and evenly until damp. The spray should coat the surface but not soak through. Let sit for 1-2 minutes. Use a wet/dry vacuum (such as a Shop Vac) to remove all moisture from the surface. Allow to air dry until completely dry.
[Link](#)

stool fabric
union cloth - charcoal

100% Polyester
Finish
[Water Repellent](#)
Backing
[Acrylic](#)
Cleaning
[Water-based/Solvent \(WS\)](#)
[Link](#)



northwoods mall | setting 2 | qty 5

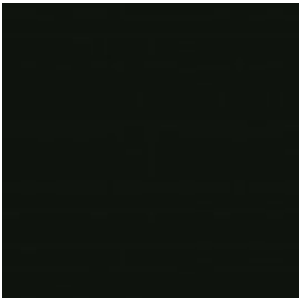
Carpenter Son Waterfall Bar Height Table
*48D x 96L x 42H
*black walnut with finish to coordinate with umami tables



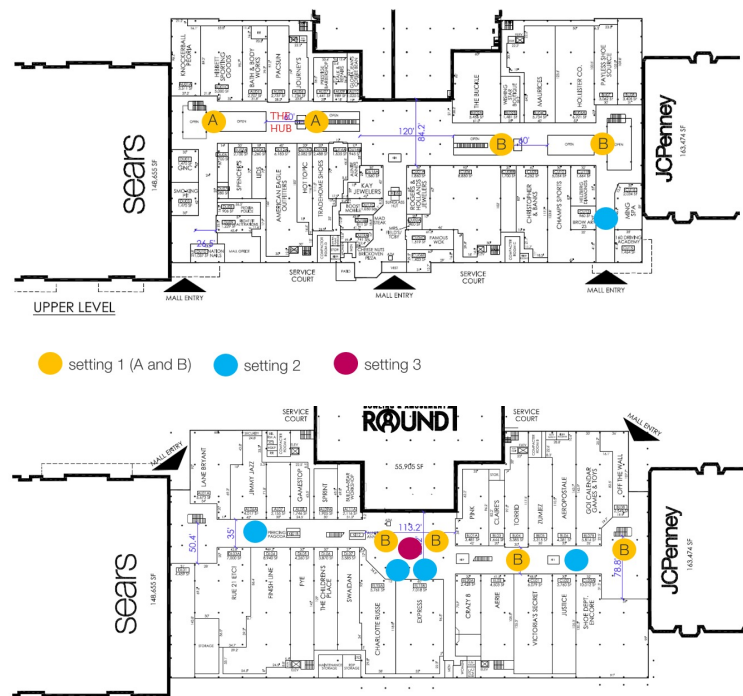
stool fabric
union cloth - charcoal



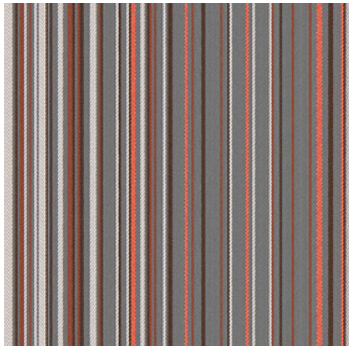
stool base
low gloss black



northwoods mall | setting 3 | qty 1



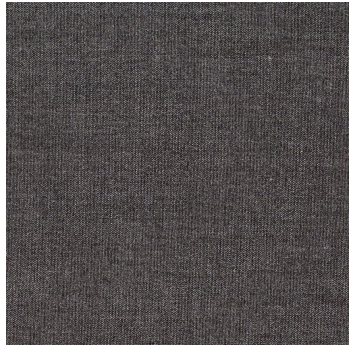
chair fabric
queue - volcano



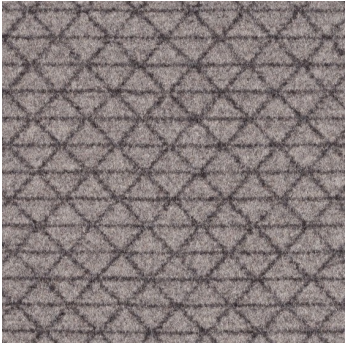
chair base
desert



sectional fabric
remix - 163



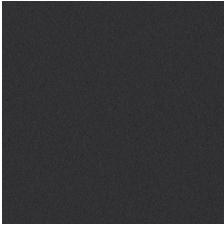
sectional accent fabric
bixby micro overcast



umami laminate
virginia walnut

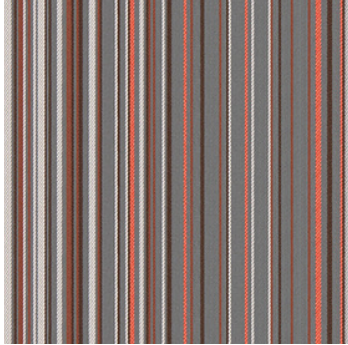


umami base
obsidian



northwoods mall | setting 3 | qty 1 | cleaning care instructions

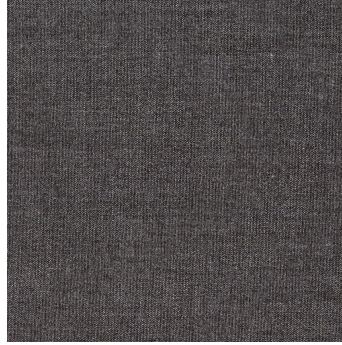
chair fabric
queue - volcano



96% Polyester, 4% Post-Consumer Recycled Polyester. W/B+Steam - Clean with water-based cleanser, diluted household bleach, or steam clean.

[Link](#)

sectional fabric
remix - 163



90% new wool worsted 10% nylon

Cleaning and care:

Do not wash

Do not bleach

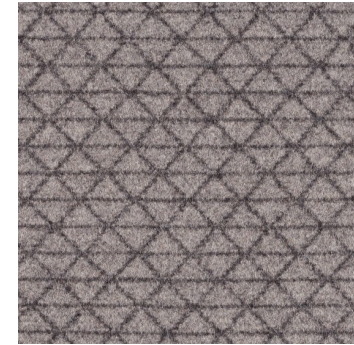
Do not tumble dry

Iron at medium temperature (max. 150°C)

Professional dry cleaning with tetrachloroethylene, normal process

[Link](#)

sectional accent fabric
bixby micro overcast



20% Nylon (Solution Dyed), 80% Wool

Cleaning

[Solvent \(S\)](#)

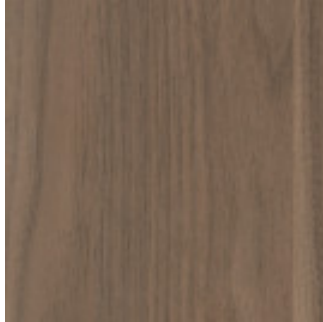
Clean only with solvent-based cleaner. Do not saturate. Do not use water.

[Link](#)

Chair base
desert



umami laminate
virginia walnut



1.Use one of the 5 cleaners listed below.

2.Spray hard surfaces lightly and evenly.

3.Wipe dry.

- Lysol Disinfecting Wipes

- Formula 409 Disinfecting Spray

- Clorox Non-Bleach Disinfecting Wipes

- Lysol All Purpose Spray Cleaner

- Fantastik All Purpose Spray Cleaner

[Link](#)

thank you

LOTH

Grandview Work Studio
855 Grandview Ave.
Columbus, OH 43215
www.lothinc.com

Julie Voss

Workplace Consultant
c. 614.582.2997
e. jvoss@lothinc.com

Lorene Haimerl

Executive Vice President, Sales
c. 614.425.8805
o. 614.487.4143
e. lhaimerl@lothinc.com

Callie Puskar

Senior Workplace Designer
c. 330.398.0320
e. cpuskar@lothinc.com