



Steelcase
Authorized Dealer

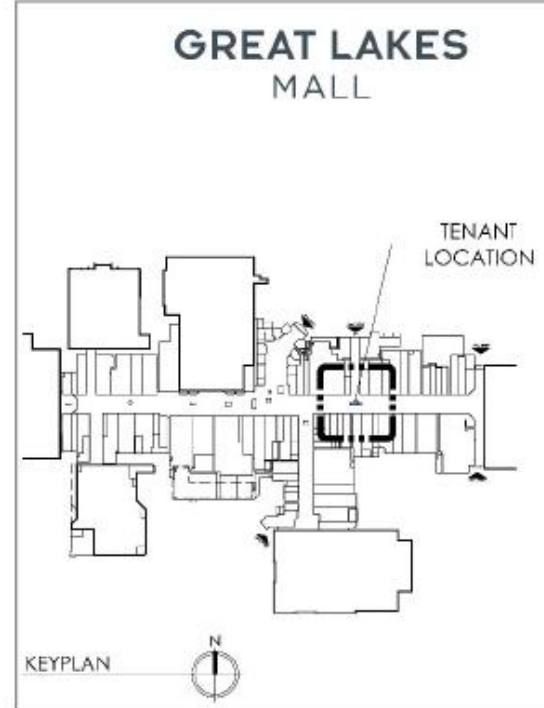
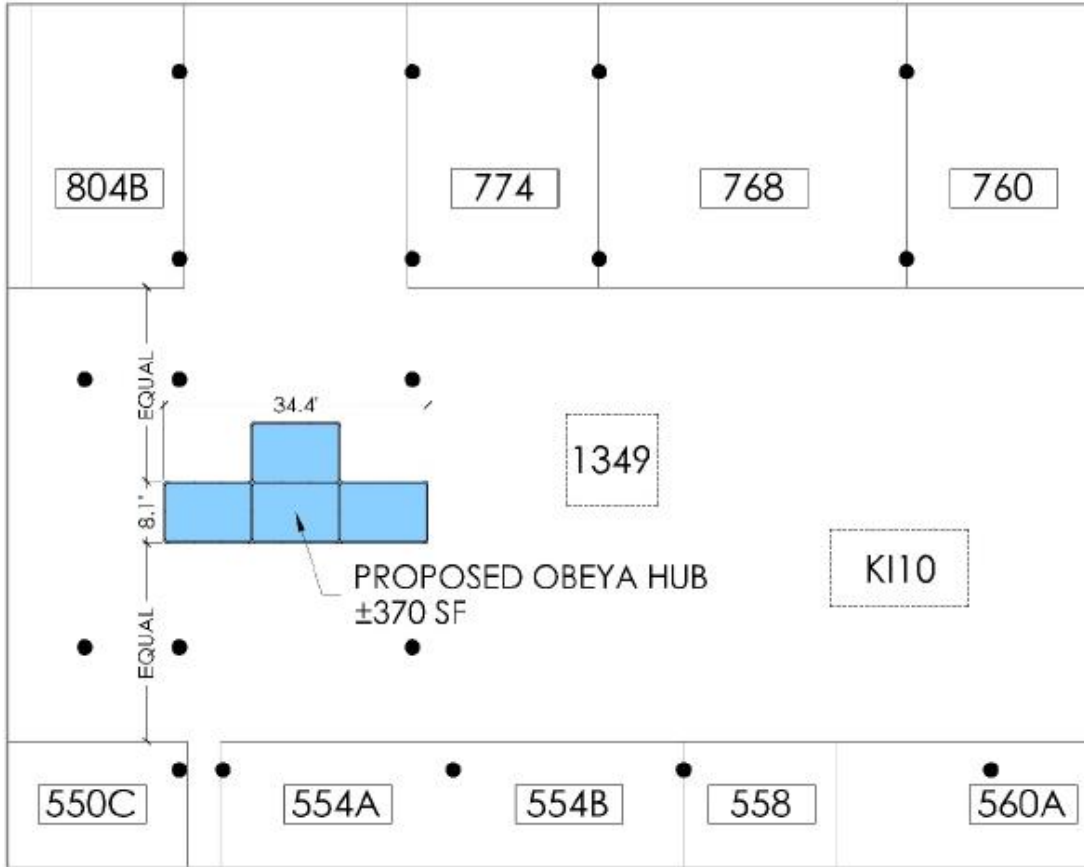
TOP
WORK
PLACES
2019

COLUMBUS
CEO

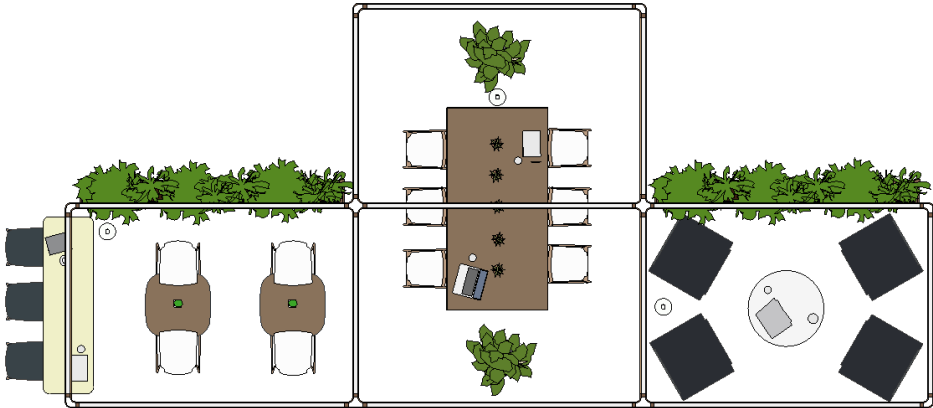
Project:
the HUB
Great Lakes Mall
care and cleaning package

**WASHINGTON
PRIME GROUP®**

the hub | MIDWEST beta location | GREAT LAKES MALL



the hub | MIDWEST beta location | GREAT LAKES MALL



the hub | MIDWEST beta location | GREAT LAKES MALL

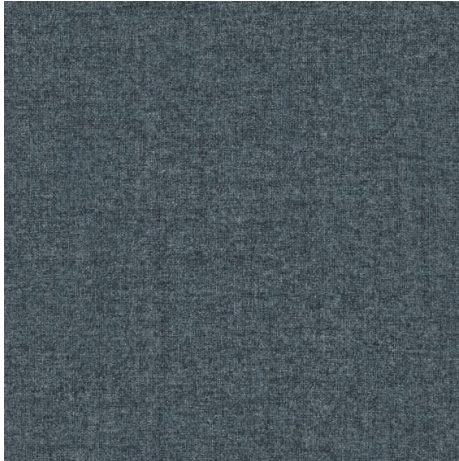


the hub | MIDWEST beta location | GREAT LAKES MALL | color palette

brisa – night navy
loung chair fabric



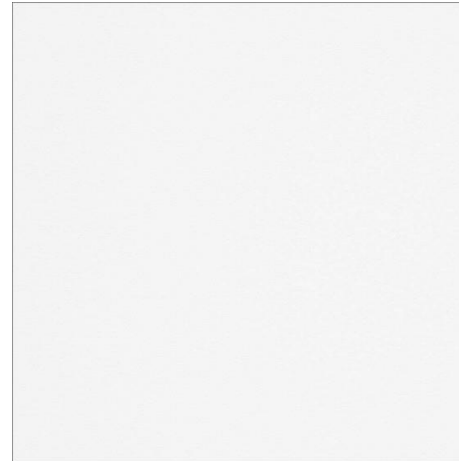
billiard cloth – storm cloud
loung chair accent fabric



super flat matte desert
structure and planter boxes



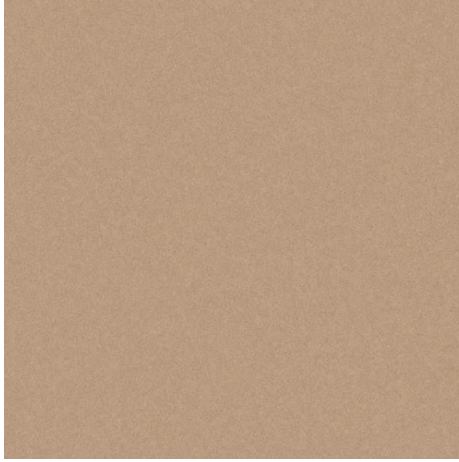
artic white
laminare tabletops



virginia walnut
laminare tabletops



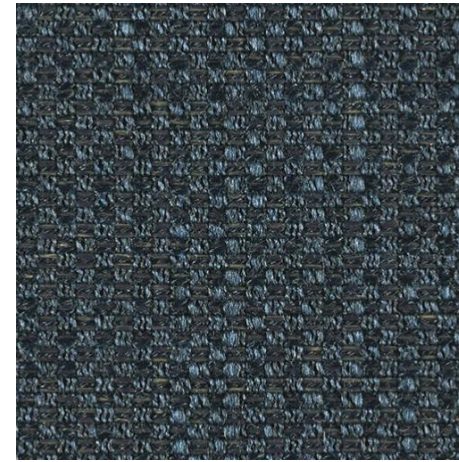
matte brass
leg and base accent paint



white oak
wood stools

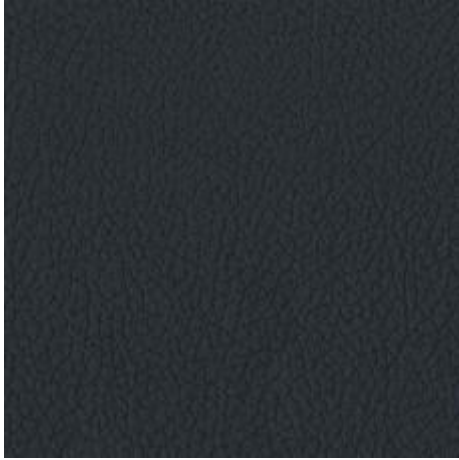


bark cloth - navy
slope chairs



brisa – night navy

lounge chair fabric



100% Polyurethane Surface 65% Polyester,
35% Rayon backing

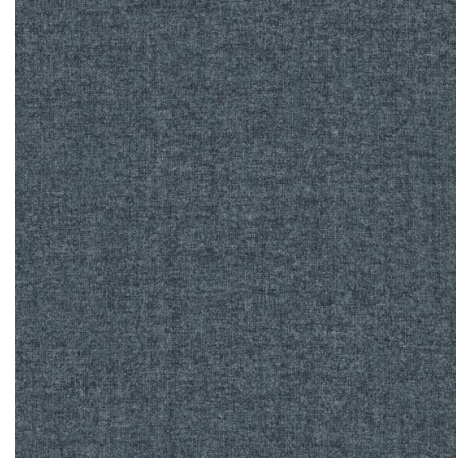
Recommended Cleaning Instructions for Ultrafabrics® One of the best ways to keep Ultrafabrics looking great is through proper maintenance and regular cleaning to prevent excessive dirt from accumulating. To help keep your quality fabrics looking their best, follow these guidelines to extend the life of the fabric:

- Wipe up spills as soon as they occur
 - Clean with soap and water
 - Sanitize using disinfectants such as (1:5) bleach/water solution
 - For stubborn stains, wipe off with isopropyl alcohol as soon as possible*
 - Thoroughly rinse all solution residue with clean water
 - Air dry
- This information is not a guarantee. Please use all cleaning and disinfecting agents safely and as instructed. The use of other cleaning agents, disinfectants, conditioners or protectants is not recommended as they can degrade fabric's performance and may void Ultrafabrics warranty. Ink & Stain Resistant collections note: A variety of clothing and accessories may contain dyes that could transfer to lighter colors, depending upon variations in temperature and humidity. Dye transfer is difficult to control, not always fully preventable, and may be irreversible. Fabric may not protect against intentional stains or permanent inks.

[LINK](#)

billiard cloth – storm cloud

lounge chair accent fabric



Content 100% Polyester
Finish [Crypton](#)
Backing Fluid Barrier (Crypton)
Cleaning [Water-based Modified \(WM\)](#)

Clean only with water-based Crypton® cleaners or detergent using the minimum amount of liquid. Do not use solvents. CRYPTON™ - WM Cleaning Code Regular Maintenance Most all spills can be easily cleaned with a towel before they dry. Just simply wipe up the spill with a clean cloth - Identify stain and use the stain chart on www.cryptoncare.com to select the appropriate cleaner, Crypton Care Gold (Protein cleaner) or Crypton Care Purple (Ink, Grease and Iodine cleaner). - Remove any excess residue with the back of the Crypton upholstery brush. Spray the spot, lightly brush with the soft bristled Crypton upholstery brush, allow the cleaner to sit for a minute, and blot with a clean, dry towel. - If spot remains, repeat the spray, brush & blot process. - For stubborn stains, thoroughly wet the surface with the cleaners (both), brush and blot. - To keep upholstery looking new, use the Crypton Upholstery Extraction concentrate at a rate of 4 oz of concentrate per gallon of water in Crypton Care "Ruby" extractor or a similar water extraction machine to periodically extract the upholstery. Always rinse well with clean water from the extractor to remove any residue.

[LINK](#)

super flat matte desert

planter boxes



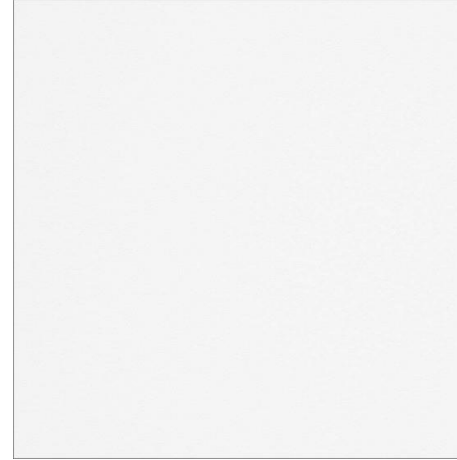
Wood care
Careful craftsmanship combined with our Eurolux® finish makes your new OFS wood furniture incredibly durable, and with proper care your furniture will provide beauty and convenience for years. All OFS Brands products undergo rigid color-match procedures to ensure the best in color consistency.

- Dust frequently using a soft, damp, clean cloth, wiping with the grain.
- Remove liquid spills immediately, using a blotting, rather than wiping motion.
- To clean, use a glass cleaner formulated with ammonia. Apply a small amount to a soft dry cloth and wipe in the direction of the grain. Dry with a soft cloth. Do not use furniture polish containing oil or silicone.
- Avoid prolonged exposure to direct sunlight, high humidity, extreme heat or cold, and moisture.

[LINK](#)

artic white

laminate tabletops



For routine maintenance wipe the surface with a damp cloth. Scratches Use an oak, walnut, or mahogany putty stick to fill in scratches in woodgrain laminate tops. Putty sticks can be purchased at paint supply and hardware stores. Stains Food dyes, marking pens, and ink newsprint may cause permanent stains. To prevent staining, remove ink as soon as possible. To remove stains, wipe surface with a damp cloth and use a mild liquid detergent or soap. Rinse with warm clean water. Use a clean, cotton cloth to dry thoroughly. For more difficult stains, use a soft bristle brush with detergent or soap to remove stains. If the stain is not removed, create a paste with baking soda and water. Apply the paste, without scrubbing, and wipe the paste off with a damp cotton cloth. Rinse with warm water. Dry completely. Scrubbing the paste may cause damage to the laminate surface. If needed, use a hard-surface, all purpose cleaner such as Formula 409®, Fantastik®, or Mr. Clean®. Follow the manufacturer's instructions for general purpose cleaning. Do not use chemical products that contain acid, sodium hydroxide, lye, or alkali. Examples of these products are rust removers, chlorine bleach, muriatic acid, metal cleaners, paint thinners, and naphtha. Do not place rags with these chemicals on the laminate surface as they may cause damage to the surface. Wipe a chemical spill immediately and clean off with water and a rag. Do not use steel wool or abrasive pads on the surface. Do not scrub with or store them on the surface as the rust may cause stains. Do not place extremely hot items directly onto the surface. Extreme heat can cause the surface to crack. Do not cut on the surface with a knife or hammer or pound as this can result in scratches and leave marks and dents.

[LINK](#)

virginia walnut

laminate tabletops

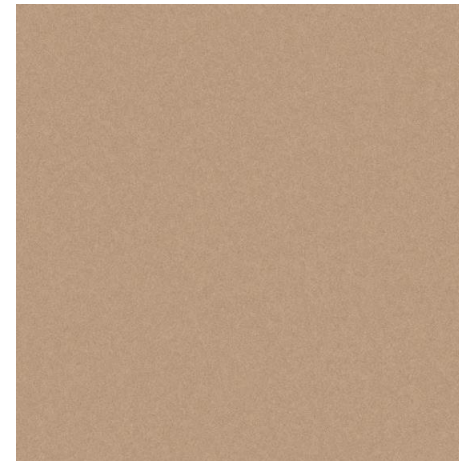


For routine maintenance wipe the surface with a damp cloth. Scratches Use an oak, walnut, or mahogany putty stick to fill in scratches in woodgrain laminate tops. Putty sticks can be purchased at paint supply and hardware stores. Stains Food dyes, marking pens, and ink newsprint may cause permanent stains. To prevent staining, remove ink as soon as possible. To remove stains, wipe surface with a damp cloth and use a mild liquid detergent or soap. Rinse with warm clean water. Use a clean, cotton cloth to dry thoroughly. For more difficult stains, use a soft bristle brush with detergent or soap to remove stains. If the stain is not removed, create a paste with baking soda and water. Apply the paste, without scrubbing, and wipe the paste off with a damp cotton cloth. Rinse with warm water. Dry completely. Scrubbing the paste may cause damage to the laminate surface. If needed, use a hard-surface, all purpose cleaner such as Formula 409®, Fantastik®, or Mr. Clean®. Follow the manufacturer's instructions for general purpose cleaning. Do not use chemical products that contain acid, sodium hydroxide, lye, or alkali. Examples of these products are rust removers, chlorine bleach, muriatic acid, metal cleaners, paint thinners, and naphtha. Do not place rags with these chemicals on the laminate surface as they may cause damage to the surface. Wipe a chemical spill immediately and clean off with water and a rag. Do not use steel wool or abrasive pads on the surface. Do not scrub with or store them on the surface as the rust may cause stains. Do not place extremely hot items directly onto the surface. Extreme heat can cause the surface to crack. Do not cut on the surface with a knife or hammer or pound as this can result in scratches and leave marks and dents.

[LINK](#)

matte brass

leg and base accent paint



Wiping with a damp cloth will remove general soiling and water-borne stains. If needed, use a hard-surface, all purpose cleaner such as Formula 409, Fantastic, Top Job, or Mr. Clean. Follow the manufacturer's instructions for general purpose cleaning. To prevent staining, ink should be removed as soon as possible. Do not use paint thinners, naphtha, or solvent-based fluids. To fill scratches in woodgrain laminate tops, use an oak, walnut, or mahogany putty stick which can be purchased at paint supply and hardware stores. Clean metal finishes with a non-abrasive cleaner. Apply the cleaner sparingly, making sure that it does not come into contact with any wood surface. Wipe the hardware dry with a clean, soft cloth.

[LINK](#)

white oak

wood stools and chairs

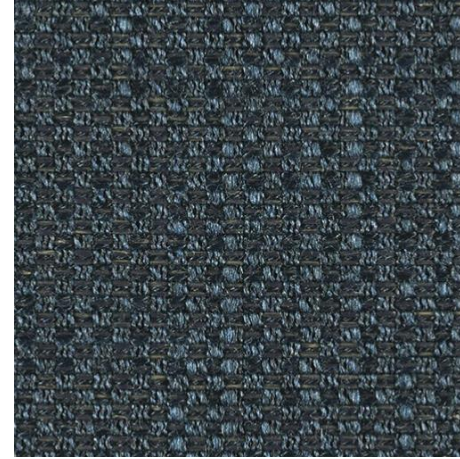


Wood is a natural material and wooden furniture will always be unique. Every piece of wood has its own unique pattern. Veins, small knots and shadows are part of wood's nature and thus should not be seen as defects. Spills should be wiped up immediately, as fluids can soak into the wood and leave permanent marks. They can also cause the tree to swell and rise up. Veneer is made from selected thin slices of wood that are precisely cut from logs. The material under the veneer is typically MDF, chipboard or plywood. Clean regularly with mild soap and water and dry with a soft cloth. Tip: Never use ammonia-based cleaners or wax on wood surfaces. Daily care is easy – use a cloth that has been moistened in clean water and wrung out. Always wipe dry with a dry cloth to remove excess moisture from the surface. The use of cleaning agents for daily cleaning is not recommended, as these may discolour the surface. If you do use cleaning agents, it is important to immediately wipe the surface dry with a clean cloth.

[LINK](#)

bark cloth - navy

slope chairs



Content 40% Acrylic, 60% Polyester (Preconsumer Recycled)
Finish [Stain Repellent](#)
Backing Acrylic
Cleaning [Water-based/Solvent \(WS\)](#)

Clean only with water-based or solvent-based cleaner. Do not saturate.

Regular and proper maintenance of your upholstery fabric permits less frequent cleaning. Maintenance is routine, on-going care which reduces soil build-up on a fabric's surface. This includes promptly treating spots and stains. - Vacuum regularly with a proper upholstery attachment to thoroughly remove air-borne dust and lint. - Promptly treat spots and stains. - Clean periodically to remove accumulated grime and retain the fabric's original appearance as much as possible. - Turn and rotate loose cushions to equalize wear and soiling. - Clean protective arm covers and headrest, so they do not look different from the rest of your upholstery. - Remove any cleaner residue by rinsing or extraction to avoid future buildup.

It is very important to note that when disinfectants, cleaners and/or bleach are permitted they should be used in the proper concentration as recommended by the manufacturer and as indicated on the product specifications and product labels. Pretest in an inconspicuous area. Disinfectants, cleaners and bleach solutions must be rinsed with clean water and dried with a clean cloth following application. If you do not follow these instructions, you may harm the fabric and void product warranties. Avoid cleaners and Disinfectants containing abrasives.

[LINK](#)

thank you

LOTH

Grandview Work Studio
855 Grandview Ave.
Columbus, OH 43215
www.lothinc.com

Julie Voss

Leader, Emerging Workplaces
c. 614.582.2997
e. jvoss@lothinc.com

Lorene Haimerl

Executive Vice President, Sales
c. 614.425.8805
o. 614.487.4143
e. lhaimerl@lothinc.com

Amber Blair

Workplace Advisor
c. 419.236.9879
e. ablair@lothinc.com