

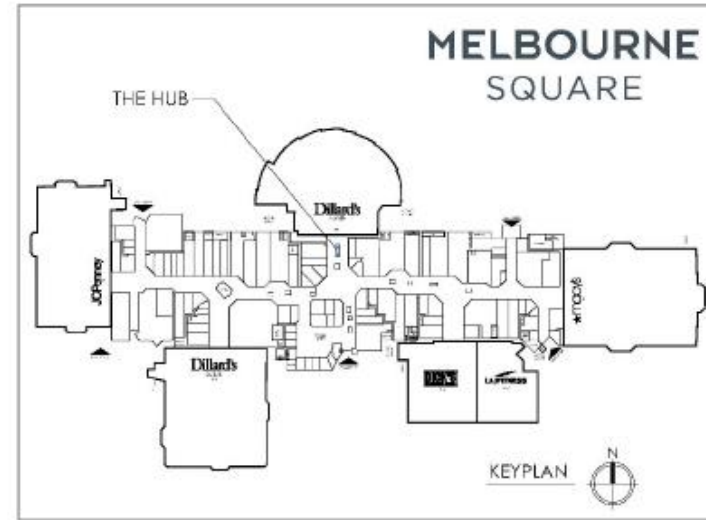
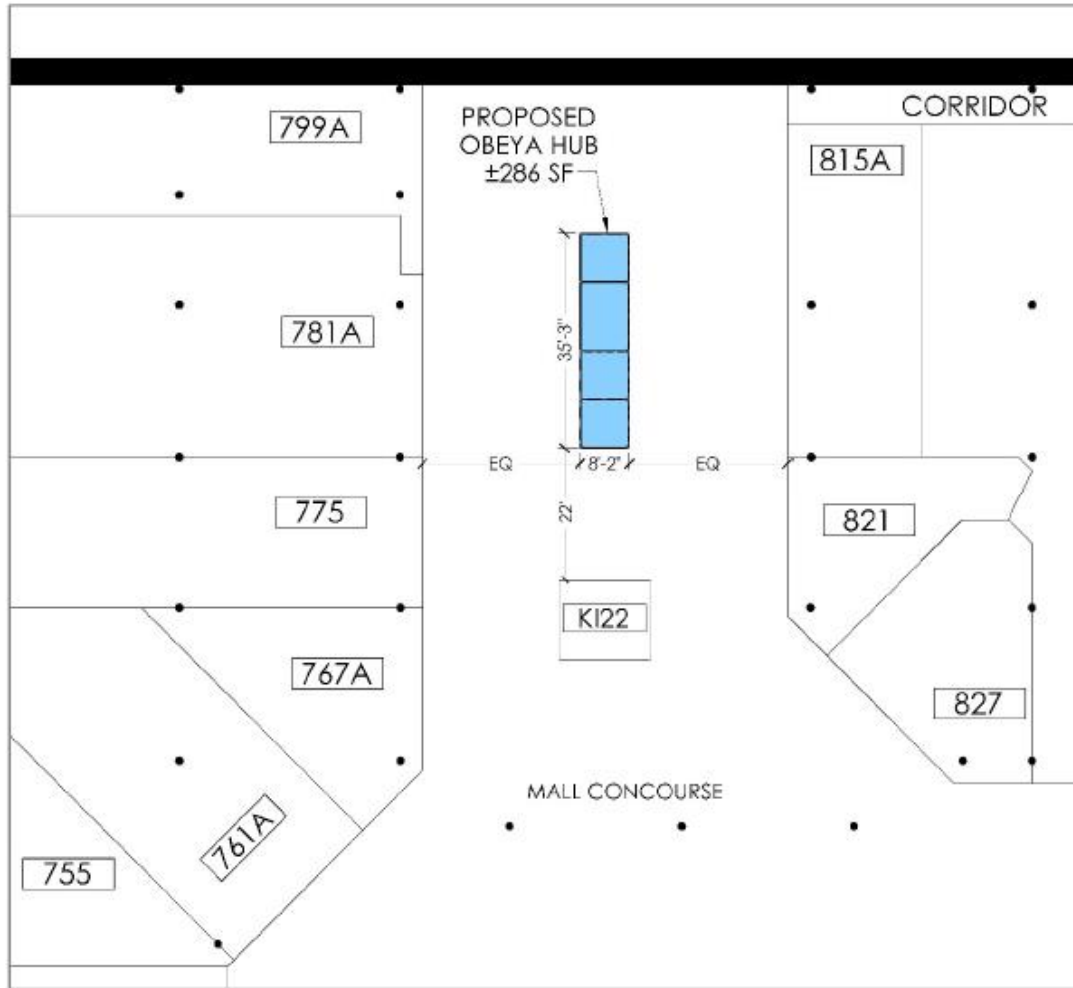


Steelcase
Authorized Dealer

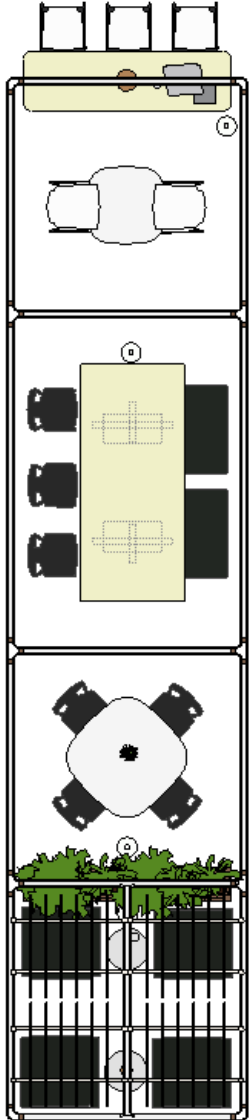


Project:
the HUB
Melbourne Square
Care and Cleaning Package

**WASHINGTON
PRIME GROUP®**



the hub | EAST beta location | MELBOURNE SQUARE



the hub | EAST beta location | MELBOURNE SQUARE



the hub | EAST beta location | MELBOURNE SQUARE | color palette

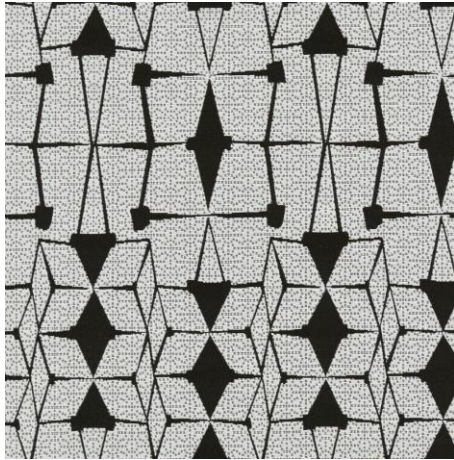
new black – harley

lounge chair fabric



vault – artic

lounge chair accent fabric



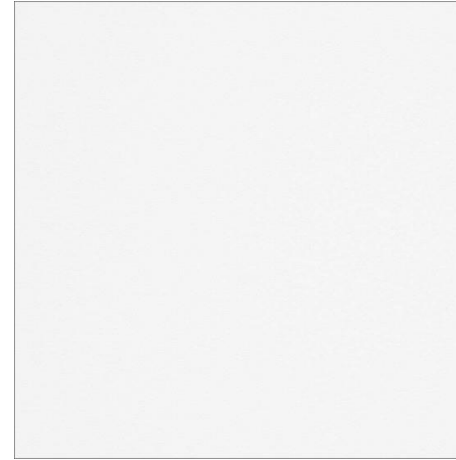
super flat matte walnut

structure and planter boxes



artic white

laminated tabletops



black lacquered oak

solid wood chairs



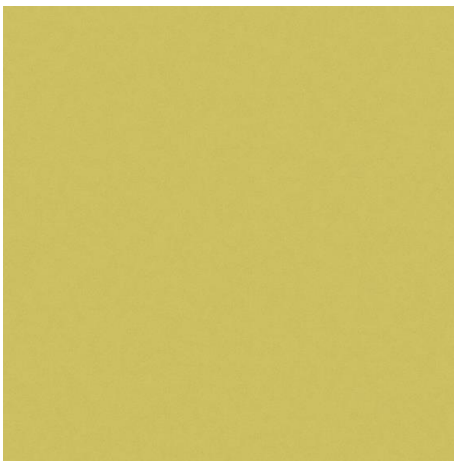
onyx

conference table base



citrine

leg and base accent paint



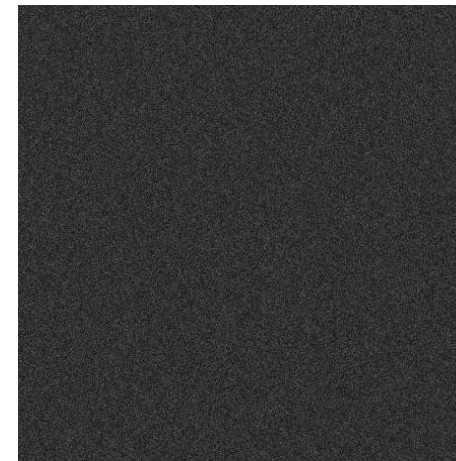
white oak

wood stools and chairs



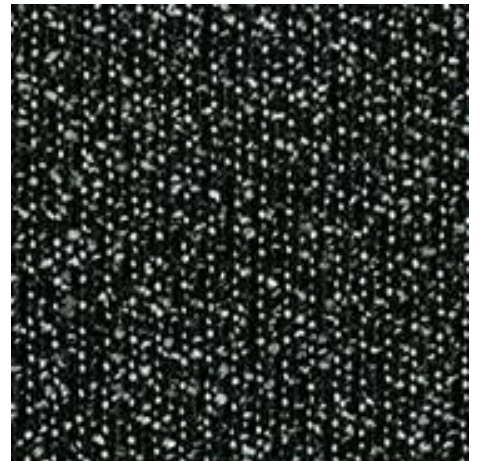
obsidian

wood stool and chair legs



new black – jack

bench fabric



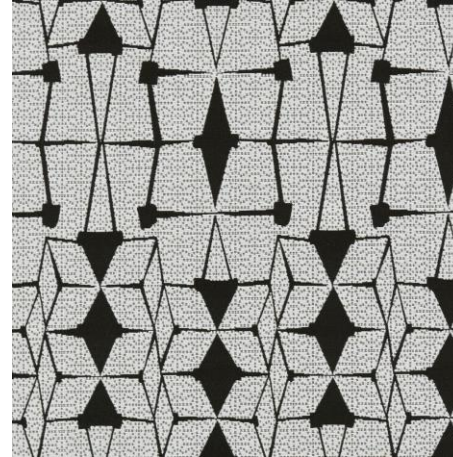
new black – harley
loung chair fabric



100% Post-Consumer Recycled Polyester
Cleaning Code: WS
Dyeing Method: Solution
Weave: Jacquard Weave
Clean with a mild detergent shampoo, foam, or dry cleaning solvents. Do not saturate with liquids. Pile fabric may require brushing to restore its appearance. Remove cushion covers to launder.

[Link](#)

vault – artic
loung chair accent fabric



Content: 72% Post-Consumer Recycled Polyester, 28% Nylon
Bleach Cleanable: May be cleaned with bleach following the proper ratio of 80% water : 20% bleach
The spot cleaning method of stain removal can be used for most light to medium stains. 1. Before spot cleaning, blot up liquids on the surface with a clean, soft towel and brush off any loose dirt. 2. Prepare a cleaning solution of 1/4 tsp mild, enzyme detergent, such as Tide®, Woolite® or Dawn® dishwashing liquid, per 1 cup of lukewarm water. 3. Apply the cleaning solution to the affected area using a spray bottle. 4. Work the solution into the affected area by lightly scrubbing the area with a sponge or soft bristle brush. Make sure to work from the outside of the stain inward so as not to spread the stain and rinse your sponge or brush frequently. 5. Allow cleaning solution to soak into the fabric. 6. Rinse thoroughly to remove all soap residues, as residues will attract dirt. Blot excess moisture with a clean, soft towel or sponge. 7. Repeat steps 3-6 as needed. 8. Allow fabric to air dry.

[Link](#)

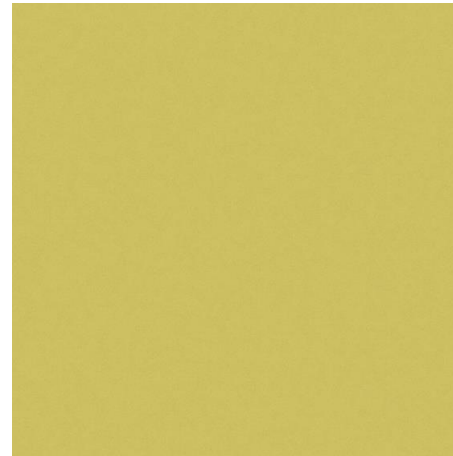
onyx
conference table base



For all laminate tops, painted and plated metals, and plastics Wiping with a damp cloth will remove general soiling and water-borne stains. If needed, use a hard-surface, all purpose cleaner such as Formula 409, Fantastic, Top Job, or Mr. Clean. Follow the manufacturer's instructions for general purpose cleaning. To prevent staining, ink should be removed as soon as possible. Do not use paint thinners, naphtha, or solvent-based fluids. To fill scratches in woodgrain laminate tops, use an oak, walnut, or mahogany putty stick which can be purchased at paint supply and hardware stores. Clean metal finishes with a non-abrasive cleaner. Apply the cleaner sparingly, making sure that it does not come into contact with any wood surface. Wipe the hardware dry with a clean, soft cloth.

[Link](#)

citrine
leg and base accent paint



For all laminate tops, painted and plated metals, and plastics Wiping with a damp cloth will remove general soiling and water-borne stains. If needed, use a hard-surface, all purpose cleaner such as Formula 409, Fantastic, Top Job, or Mr. Clean. Follow the manufacturer's instructions for general purpose cleaning. To prevent staining, ink should be removed as soon as possible. Do not use paint thinners, naphtha, or solvent-based fluids. To fill scratches in woodgrain laminate tops, use an oak, walnut, or mahogany putty stick which can be purchased at paint supply and hardware stores. Clean metal finishes with a non-abrasive cleaner. Apply the cleaner sparingly, making sure that it does not come into contact with any wood surface. Wipe the hardware dry with a clean, soft cloth.

[Link](#)

super flat matte walnut
structure and planter boxes



Careful craftsmanship combined with our Euroluxe® finish makes your new OFS wood furniture incredibly durable, and with proper care your furniture will provide beauty and convenience for years. All OFS Brands products undergo rigid color-match procedures to ensure the best in color consistency.

- Dust frequently using a soft, damp, clean cloth, wiping with the grain.
- Remove liquid spills immediately, using a blotting, rather than wiping motion.
- To clean, use a glass cleaner formulated with ammonia. Apply a small amount to a soft dry cloth and wipe in the direction of the grain. Dry with a soft cloth. Do not use furniture polish containing oil or silicone.
- Avoid prolonged exposure to direct sunlight, high humidity, extreme heat or cold, and moisture.

[Link](#)

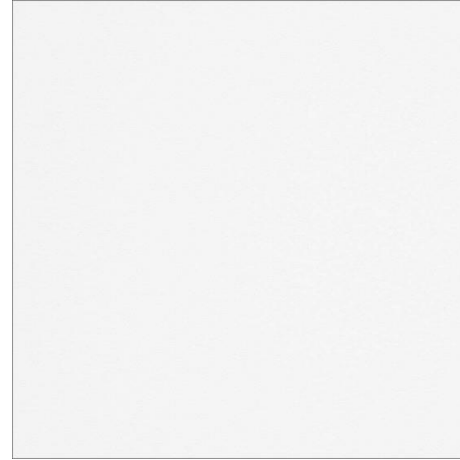
white oak
wood stools and chairs



Cleaning Wood Surfaces Keep a supply of soft, clean, absorbent cloths handy for wiping up spills and regular dusting. To dust, wipe with a slightly damp, soft cloth, using another soft cloth to dry. Always wipe the surface in the direction of the woodgrain. Use a quality cleaner or flax soap formulated especially for use on wood surfaces. Do not use oils or ammonia. Dilute the cleaner as directed by the manufacturer. Dampen but do not saturate a soft cloth with the diluted cleaning solution. Wipe the surface in the direction of the woodgrain to remove dirt and fingerprints. Wipe the surface clean with a soft, dry cloth. Quality spray wax may be applied sparingly twice a year. Excessive waxing may result in a wax build-up which feels sticky and attracts an unusual amount of dirt. For information about how to remove this wax, contact your facilities department or Steelcase dealer. Wood is a “forgiving” material which can usually be repaired.

[Link](#)

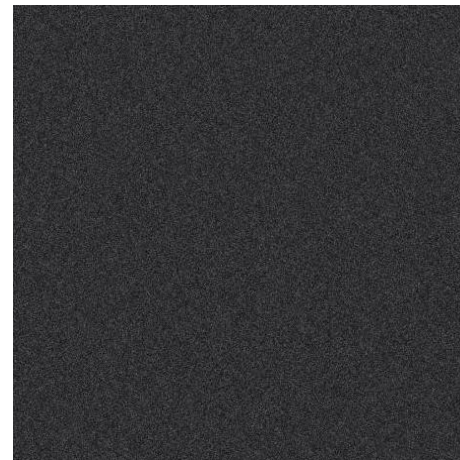
artic white
laminare tabletops



For all laminate tops, painted and plated metals, and plastics Wiping with a damp cloth will remove general soiling and water-borne stains. If needed, use a hard-surface, all purpose cleaner such as Formula 409, Fantastic, Top Job, or Mr. Clean. Follow the manufacturer’s instructions for general purpose cleaning. To prevent staining, ink should be removed as soon as possible. Do not use paint thinners, naphtha, or solvent-based fluids. To fill scratches in woodgrain laminate tops, use an oak, walnut, or mahogany putty stick which can be purchased at paint supply and hardware stores. Clean metal finishes with a non-abrasive cleaner. Apply the cleaner sparingly, making sure that it does not come into contact with any wood surface. Wipe the hardware dry with a clean, soft cloth.

[Link](#)

obsidian
wood stool and chair legs



For all laminate tops, painted and plated metals, and plastics Wiping with a damp cloth will remove general soiling and water-borne stains. If needed, use a hard-surface, all purpose cleaner such as Formula 409, Fantastic, Top Job, or Mr. Clean. Follow the manufacturer’s instructions for general purpose cleaning. To prevent staining, ink should be removed as soon as possible. Do not use paint thinners, naphtha, or solvent-based fluids. To fill scratches in woodgrain laminate tops, use an oak, walnut, or mahogany putty stick which can be purchased at paint supply and hardware stores. Clean metal finishes with a non-abrasive cleaner. Apply the cleaner sparingly, making sure that it does not come into contact with any wood surface. Wipe the hardware dry with a clean, soft cloth.

[Link](#)

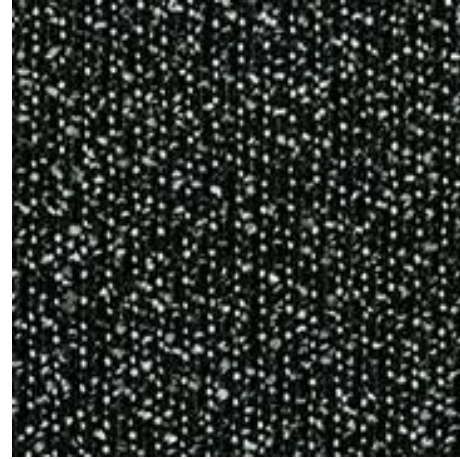
black lacquered oak
solid wood chairs



Cleaning Wood Surfaces Keep a supply of soft, clean, absorbent cloths handy for wiping up spills and regular dusting. To dust, wipe with a slightly damp, soft cloth, using another soft cloth to dry. Always wipe the surface in the direction of the woodgrain. Use a quality cleaner or flax soap formulated especially for use on wood surfaces. Do not use oils or ammonia. Dilute the cleaner as directed by the manufacturer. Dampen but do not saturate a soft cloth with the diluted cleaning solution. Wipe the surface in the direction of the woodgrain to remove dirt and fingerprints. Wipe the surface clean with a soft, dry cloth. Quality spray wax may be applied sparingly twice a year. Excessive waxing may result in a wax build-up which feels sticky and attracts an unusual amount of dirt. For information about how to remove this wax, contact your facilities department or Steelcase dealer. Wood is a “forgiving” material which can usually be repaired.

[Link](#)

new black – jack
bench fabric



100% Post-Consumer Recycled Polyester
Cleaning Code: WS
Dyeing Method: Solution
Weave: Jacquard Weave
Clean with a mild detergent shampoo, foam, or dry cleaning solvents. Do not saturate with liquids. Pile fabric may require brushing to restore its appearance. Remove cushion covers to launder.

[Link](#)

thank you

LOTH

Grandview Work Studio
855 Grandview Ave.
Columbus, OH 43215
www.lothinc.com

Julie Voss

Leader, Emerging Workplaces
c. 614.582.2997
e. jvoss@lothinc.com

Lorene Haimerl

Executive Vice President, Sales
c. 614.425.8805
o. 614.487.4143
e. lhaimerl@lothinc.com

Amber Blair

Workplace Advisor
c. 419.236.9879
e. ablair@lothinc.com