



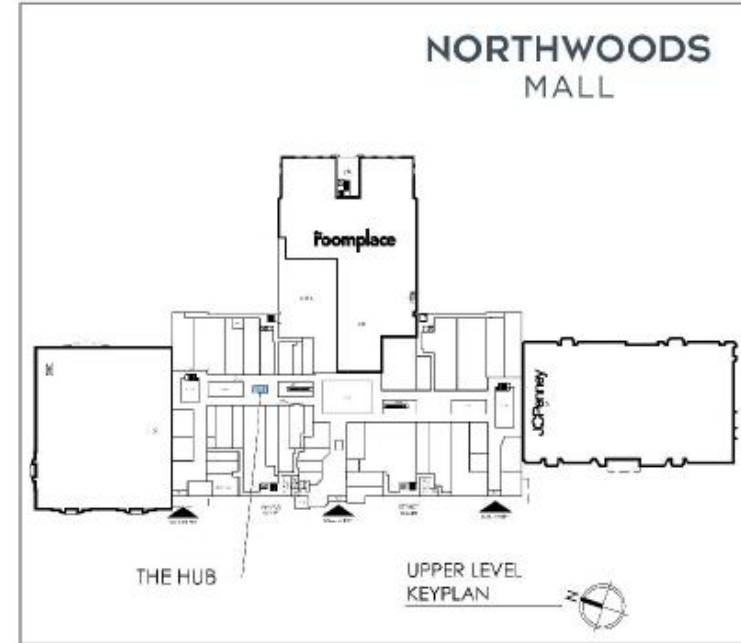
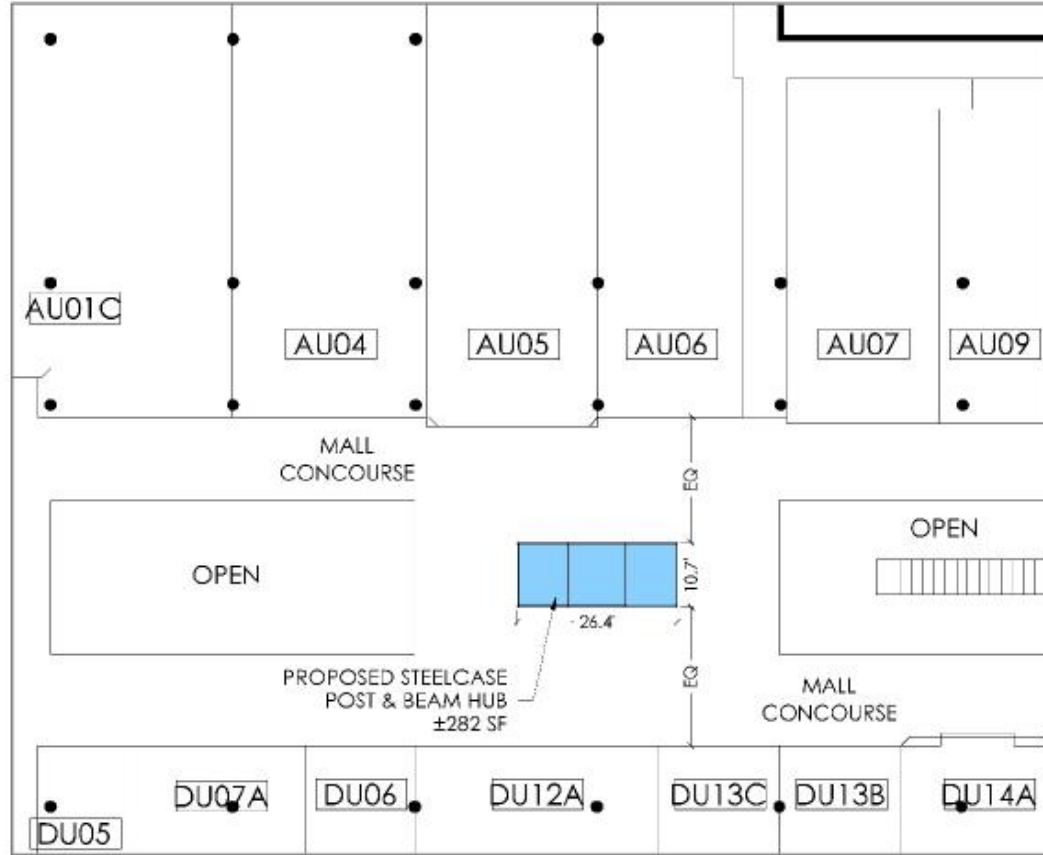
Steelcase
Authorized Dealer



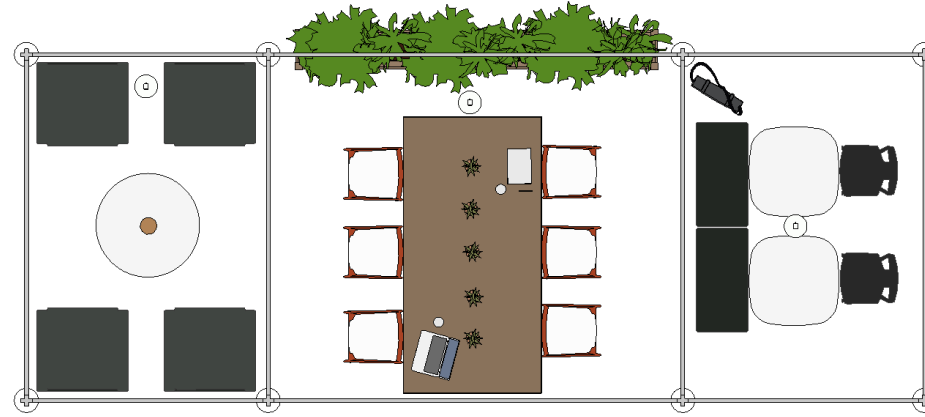
COLUMBUS
CEO

Project:
the HUB
Northwoods
care and cleaning package

**WASHINGTON
PRIME GROUP®**



the hub | CENTRAL beta location | NORTHWOODS MALL



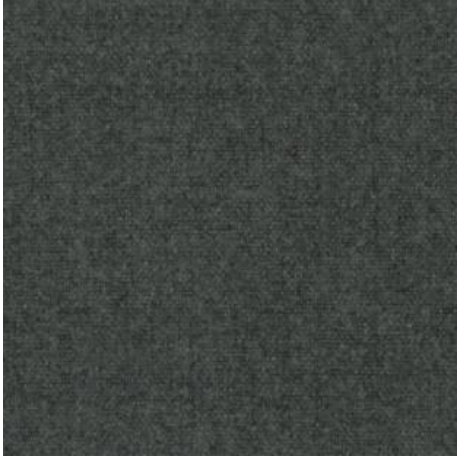
the hub | CENTRAL beta location | NORTHWOODS MALL



the hub | CENTRAL beta location | NORTHWOODS MALL | color palette

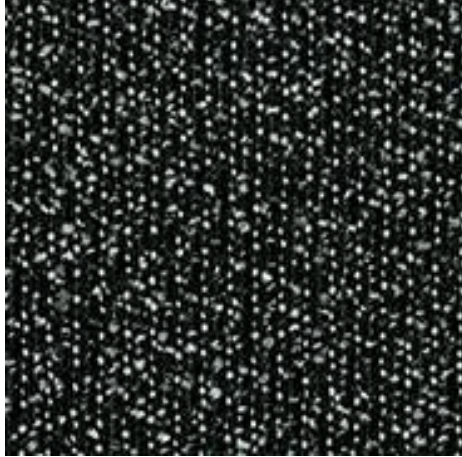
billiard cloth - ink

lounge chair fabric



new black - jack

lounge chair accent fabric



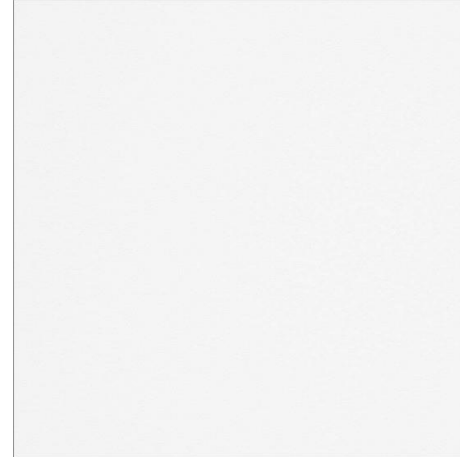
super flat matte walnut

planter boxes



artic white

laminite tabletops



black lacquered oak

solid wood chairs



virginia walnut

laminite tabletops



saffron

leg and base accent paint



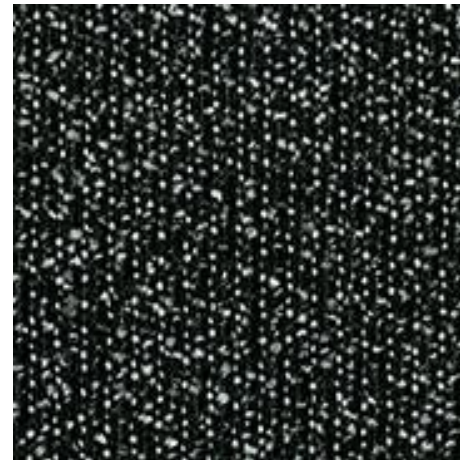
white oak

wood stools



new black - jack

bench fabric

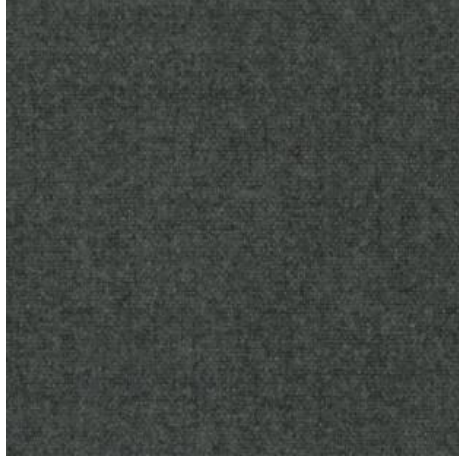


custom screen



701 Azalea

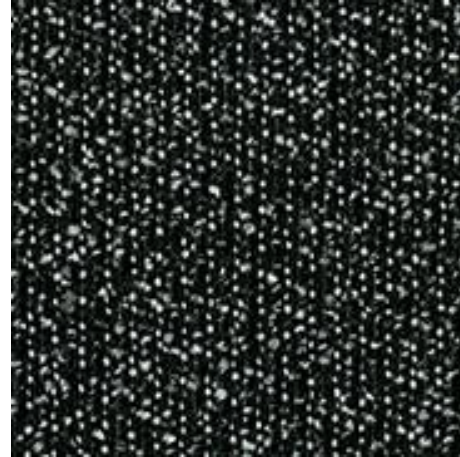
billiard cloth – ink
loung chair fabric



Cleaning Code: W Dyeing Method: Yarn Weave: Dobby Weave Fabric Backing: Crypton
W – Clean only with water-based shampoo or foam upholstery cleaner. (Water-based cleaning agents are often sold as upholstery shampoo. They are usually sold as foams, concentrated liquids, and dry compounds. Do not over wet. Do not use dry cleaning solvents. Pile fabric may require brushing to restore its appearance.
Cleaning Code W Follow these directions for removing water-borne, non-greasy soil or stains (such as coffee, milk, soft drinks, fruit juices, washable ink, etc.): 1 Gently apply a water-based cleaner, that is specifically made for cleaning fabric, to the soiled area using a clean cloth or sponge, such as an upholstery shampoo. 2 Work the cleaner into a lather or foam, if possible, to minimize soaking the fabric. Using light brushing motions, work from the outside of the soiled area toward the center to prevent rings. 3 Allow fabric to dry completely, then vacuum thoroughly.

[Link](#)

new black – jack
loung chair accent fabric



100% Post-Consumer Recycled Polyester
Cleaning Code: WS
Dyeing Method: Solution
Weave: Jacquard Weave
Clean with a mild detergent shampoo, foam, or dry cleaning solvents. Do not saturate with liquids. Pile fabric may require brushing to restore its appearance. Remove cushion covers to launder.

[Link](#)

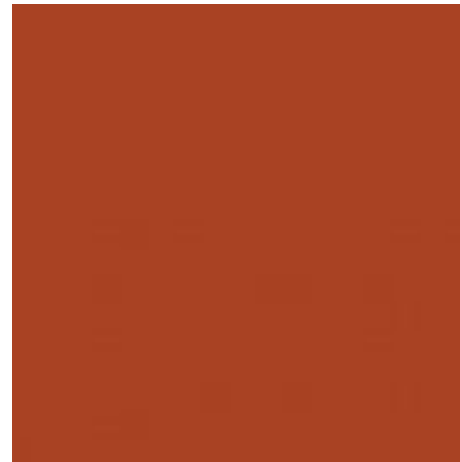
virginia walnut
laminat tabletops



For all laminate tops, painted and plated metals, and plastics Wiping with a damp cloth will remove general soiling and water-borne stains. If needed, use a hard-surface, all purpose cleaner such as Formula 409, Fantastic, Top Job, or Mr. Clean. Follow the manufacturer’s instructions for general purpose cleaning. To prevent staining, ink should be removed as soon as possible. Do not use paint thinners, naphtha, or solvent-based fluids. To fill scratches in woodgrain laminate tops, use an oak, walnut, or mahogany putty stick which can be purchased at paint supply and hardware stores. Clean metal finishes with a non-abrasive cleaner. Apply the cleaner sparingly, making sure that it does not come into contact with any wood surface. Wipe the hardware dry with a clean, soft cloth.

[Link](#)

saffron
leg and base accent paint



For all laminate tops, painted and plated metals, and plastics Wiping with a damp cloth will remove general soiling and water-borne stains. If needed, use a hard-surface, all purpose cleaner such as Formula 409, Fantastic, Top Job, or Mr. Clean. Follow the manufacturer’s instructions for general purpose cleaning. To prevent staining, ink should be removed as soon as possible. Do not use paint thinners, naphtha, or solvent-based fluids. To fill scratches in woodgrain laminate tops, use an oak, walnut, or mahogany putty stick which can be purchased at paint supply and hardware stores. Clean metal finishes with a non-abrasive cleaner. Apply the cleaner sparingly, making sure that it does not come into contact with any wood surface. Wipe the hardware dry with a clean, soft cloth.

[Link](#)

super flat matte walnut
structure and planter boxes

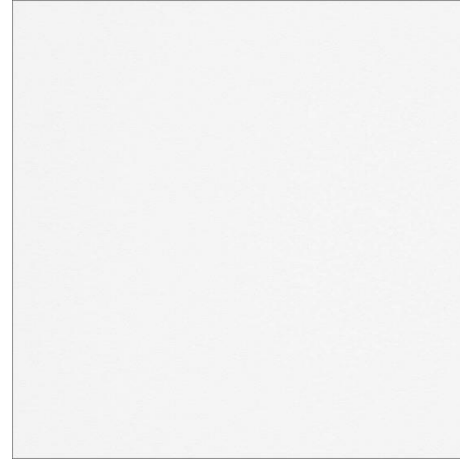


Careful craftsmanship combined with our Euroluxe® finish makes your new OFS wood furniture incredibly durable, and with proper care your furniture will provide beauty and convenience for years. All OFS Brands products undergo rigid color-match procedures to ensure the best in color consistency.

- Dust frequently using a soft, damp, clean cloth, wiping with the grain.
- Remove liquid spills immediately, using a blotting, rather than wiping motion.
- To clean, use a glass cleaner formulated with ammonia. Apply a small amount to a soft dry cloth and wipe in the direction of the grain. Dry with a soft cloth. Do not use furniture polish containing oil or silicone.
- Avoid prolonged exposure to direct sunlight, high humidity, extreme heat or cold, and moisture.

[Link](#)

artic white
laminare tabletops



For all laminate tops, painted and plated metals, and plastics Wiping with a damp cloth will remove general soiling and water-borne stains. If needed, use a hard-surface, all purpose cleaner such as Formula 409, Fantastic, Top Job, or Mr. Clean. Follow the manufacturer's instructions for general purpose cleaning. To prevent staining, ink should be removed as soon as possible. Do not use paint thinners, naphtha, or solvent-based fluids. To fill scratches in woodgrain laminate tops, use an oak, walnut, or mahogany putty stick which can be purchased at paint supply and hardware stores. Clean metal finishes with a non-abrasive cleaner. Apply the cleaner sparingly, making sure that it does not come into contact with any wood surface. Wipe the hardware dry with a clean, soft cloth.

[Link](#)

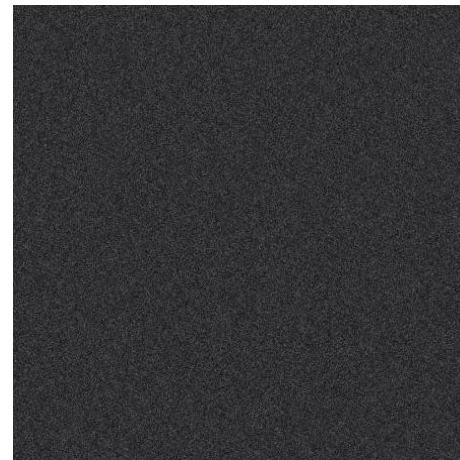
white oak
wood stools and chairs



Cleaning Wood Surfaces Keep a supply of soft, clean, absorbent cloths handy for wiping up spills and regular dusting. To dust, wipe with a slightly damp, soft cloth, using another soft cloth to dry. Always wipe the surface in the direction of the woodgrain. Use a quality cleaner or flax soap formulated especially for use on wood surfaces. Do not use oils or ammonia. Dilute the cleaner as directed by the manufacturer. Dampen but do not saturate a soft cloth with the diluted cleaning solution. Wipe the surface in the direction of the woodgrain to remove dirt and fingerprints. Wipe the surface clean with a soft, dry cloth. Quality spray wax may be applied sparingly twice a year. Excessive waxing may result in a wax build-up which feels sticky and attracts an unusual amount of dirt. For information about how to remove this wax, contact your facilities department or Steelcase dealer. Wood is a "forgiving" material which can usually be repaired.

[Link](#)

obsidian
wood stool and chair legs



For all laminate tops, painted and plated metals, and plastics Wiping with a damp cloth will remove general soiling and water-borne stains. If needed, use a hard-surface, all purpose cleaner such as Formula 409, Fantastic, Top Job, or Mr. Clean. Follow the manufacturer's instructions for general purpose cleaning. To prevent staining, ink should be removed as soon as possible. Do not use paint thinners, naphtha, or solvent-based fluids. To fill scratches in woodgrain laminate tops, use an oak, walnut, or mahogany putty stick which can be purchased at paint supply and hardware stores. Clean metal finishes with a non-abrasive cleaner. Apply the cleaner sparingly, making sure that it does not come into contact with any wood surface. Wipe the hardware dry with a clean, soft cloth.

[Link](#)

black lacquered oak
solid wood chairs



Cleaning Wood Surfaces Keep a supply of soft, clean, absorbent cloths handy for wiping up spills and regular dusting. To dust, wipe with a slightly damp, soft cloth, using another soft cloth to dry. Always wipe the surface in the direction of the woodgrain. Use a quality cleaner or flax soap formulated especially for use on wood surfaces. Do not use oils or ammonia. Dilute the cleaner as directed by the manufacturer. Dampen but do not saturate a soft cloth with the diluted cleaning solution. Wipe the surface in the direction of the woodgrain to remove dirt and fingerprints. Wipe the surface clean with a soft, dry cloth. Quality spray wax may be applied sparingly twice a year. Excessive waxing may result in a wax build-up which feels sticky and attracts an unusual amount of dirt. For information about how to remove this wax, contact your facilities department or Steelcase dealer. Wood is a “forgiving” material which can usually be repaired.

[Link](#)

701 azalea
custom screen



Non-woven, soft, recycled polyester felt.
5% Polyester (Pre-consumer Recycled), 95% Polyester (Post-consumer Recycled)
FR Treated
Water-based / Solvent-based (W/WS)
Spot clean with mild water-based or solvent-based detergent.
Can be disinfected with a 10:1 Bleach Solution.
WS Cleaning Code Use water and solvent-based cleaners for spots and stains. → Vacuum regularly with a proper attachment to thoroughly remove air-borne dust and lint.
When vacuuming use ceiling to floor motions. → Do not rub or brush excessively or you may cause fuzzing.

[Link](#)

thank you

LOTH

Grandview Work Studio
855 Grandview Ave.
Columbus, OH 43215
www.lothinc.com

Julie Voss

Leader, Emerging Workplaces
c. 614.582.2997
e. jvoss@lothinc.com

Lorene Haimerl

Executive Vice President, Sales
c. 614.425.8805
o. 614.487.4143
e. lhaimerl@lothinc.com

Amber Blair

Workplace Advisor
c. 419.236.9879
e. ablair@lothinc.com