



LOTH

Steelcase
Authorized Dealer



**COLUMBUS
CEO**

Project:
Town Center at Aurora
Exterior Entrance

**WASHINGTON
PRIME GROUP®**

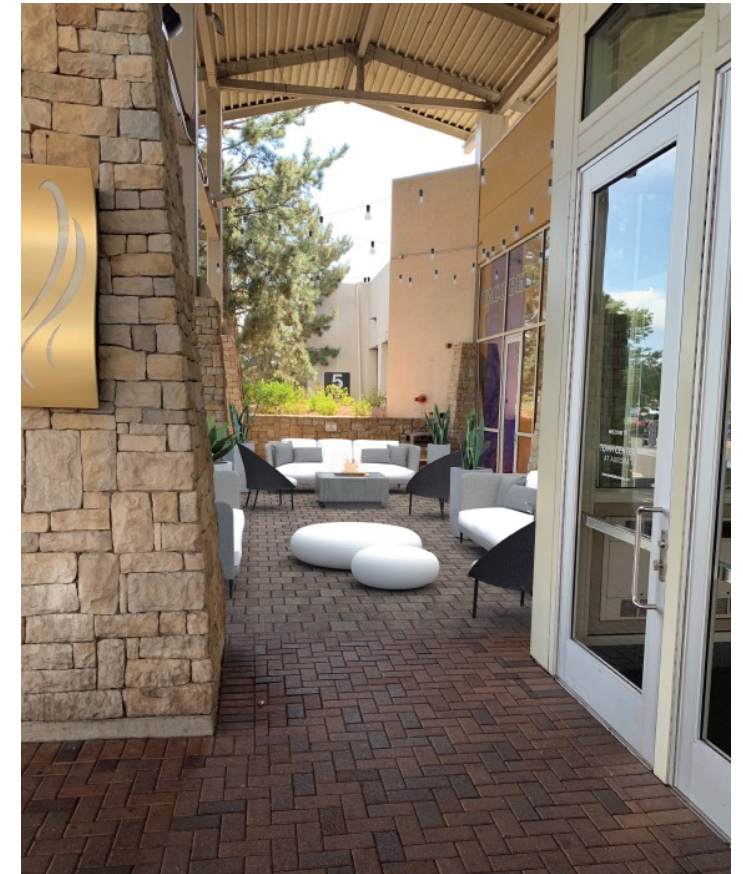
town center at aurora | exterior entrance | considerations

Aurora, Colorado

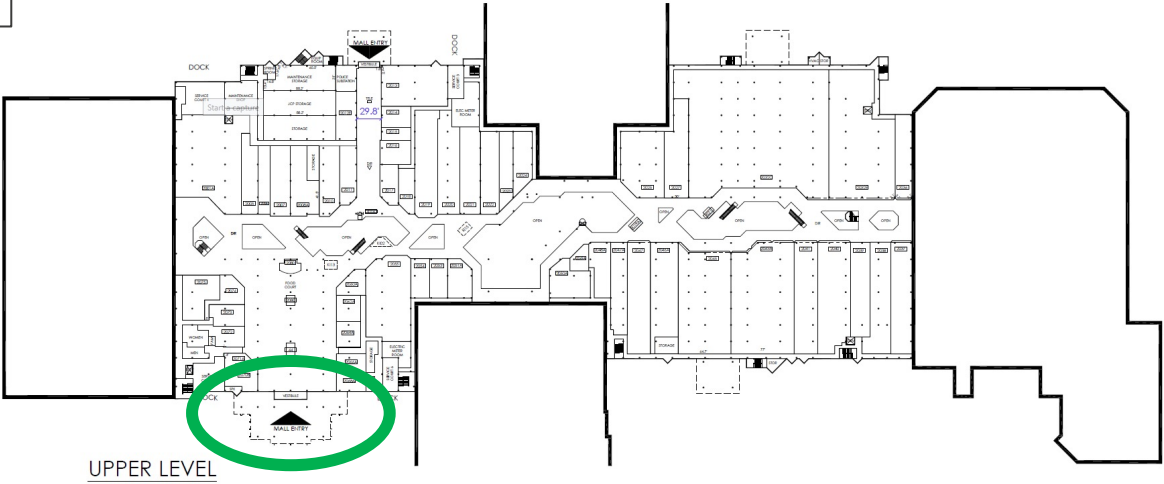
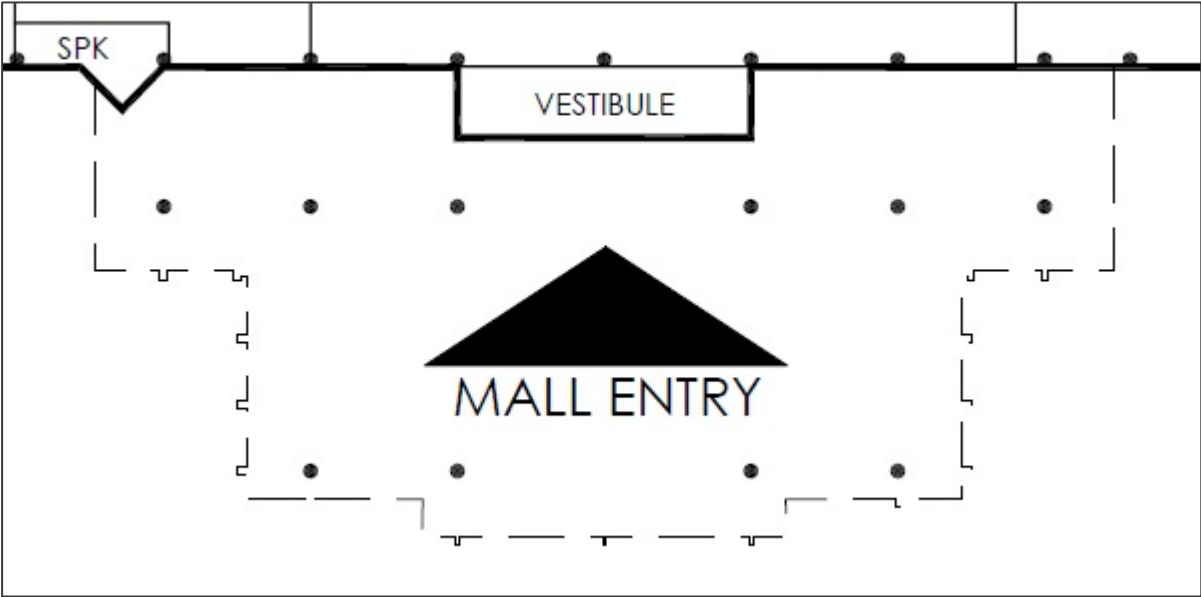
Budget: TBD

To include:

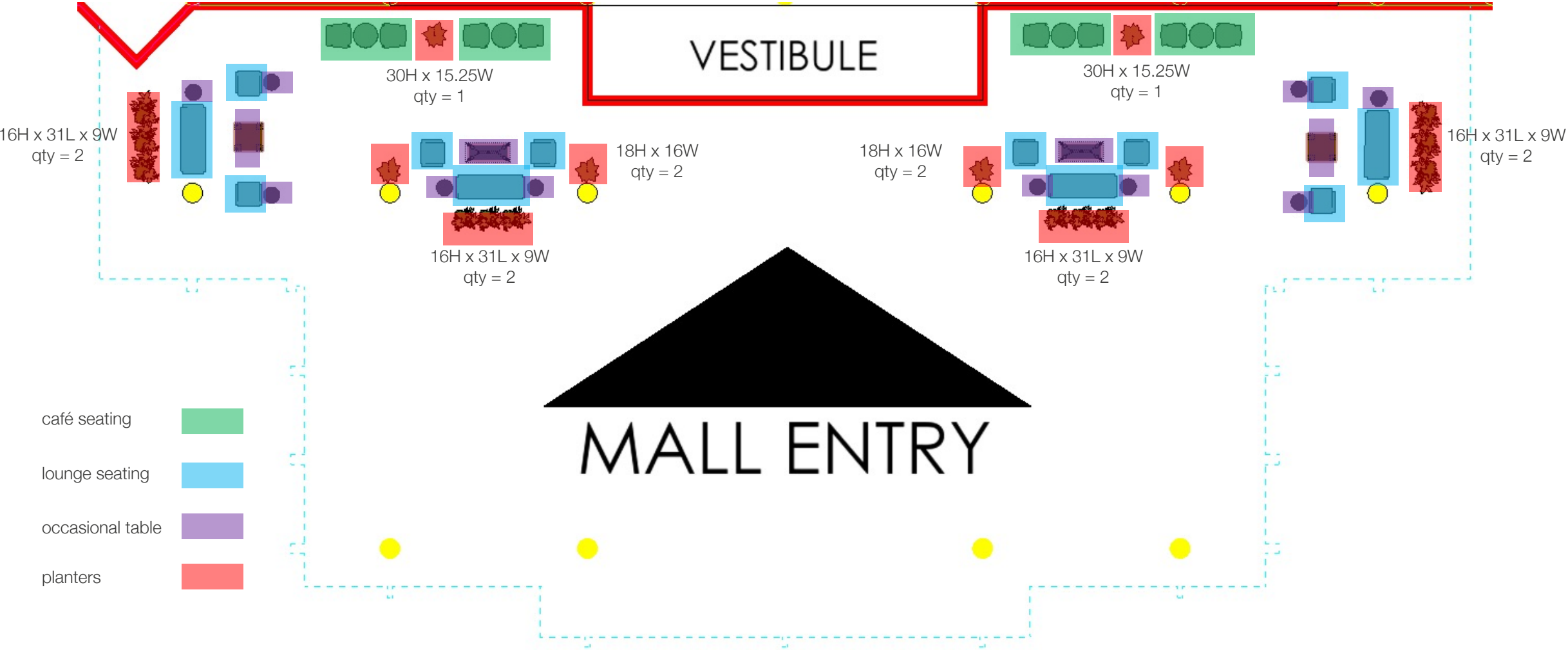
- soft seating and occasional tables
- include planters if budget allows



town center at aurora | exterior entrance | layout



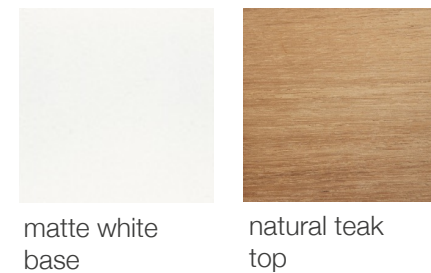
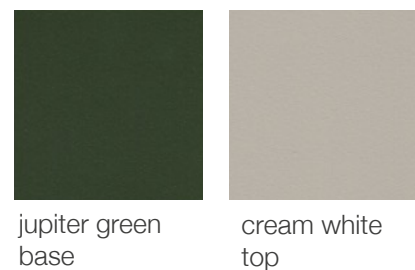
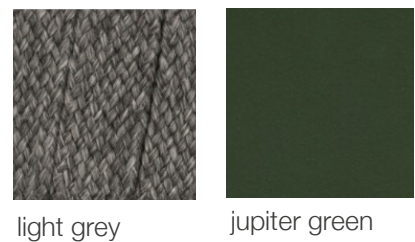
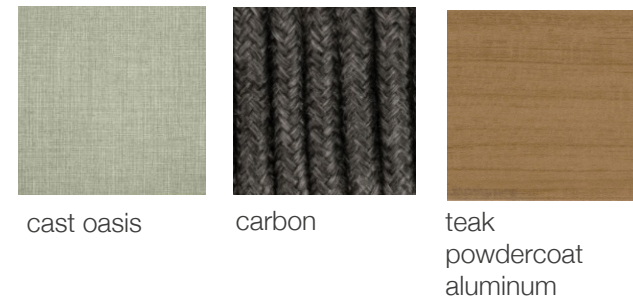
town center at aurora | exterior entrance | proposed furniture layout



town center at aurora | exterior entrance | soft seating selection



town center at aurora | exterior entrance | soft seating | sage green color palette





cast oasis



jupiter green

100% Sunbrella Acrylic
WS, Bleach Cleanable
[Link](#)



carbon

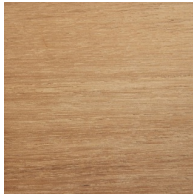


light grey

[Link](#) – go to products,
then care maintenance



teak powdercoat
aluminum



natural teak
top

[Link](#) – go to products,
then care maintenance



grey



cream white
top

[Link](#) – go to products,
then care maintenance

town center at aurora | exterior entrance | planters



high grade polyethylene planters
black finish

sizes:

30H x 15.25W = qty 2

16H x 31L x 9W = qty 8

18H x 16W = qty 4

thank you

LOTH

Grandview Work Studio
855 Grandview Ave.
Columbus, OH 43215
www.lothinc.com

Julie Voss

Leader, Emerging Workplaces
c. 614.582.2997
e. jvoss@lothinc.com

Lorene Haimerl

Executive Vice President, Sales
c. 614.425.8805
o. 614.487.4143
e. lhaimerl@lothinc.com

Amber Blair

Workplace Advisor
c. 419.236.9879
e. ablair@lothinc.com