



**Steelcase**  
Authorized Dealer



Project:  
Town Center at Aurora  
Exterior Entrance

**WASHINGTON  
PRIME GROUP®**

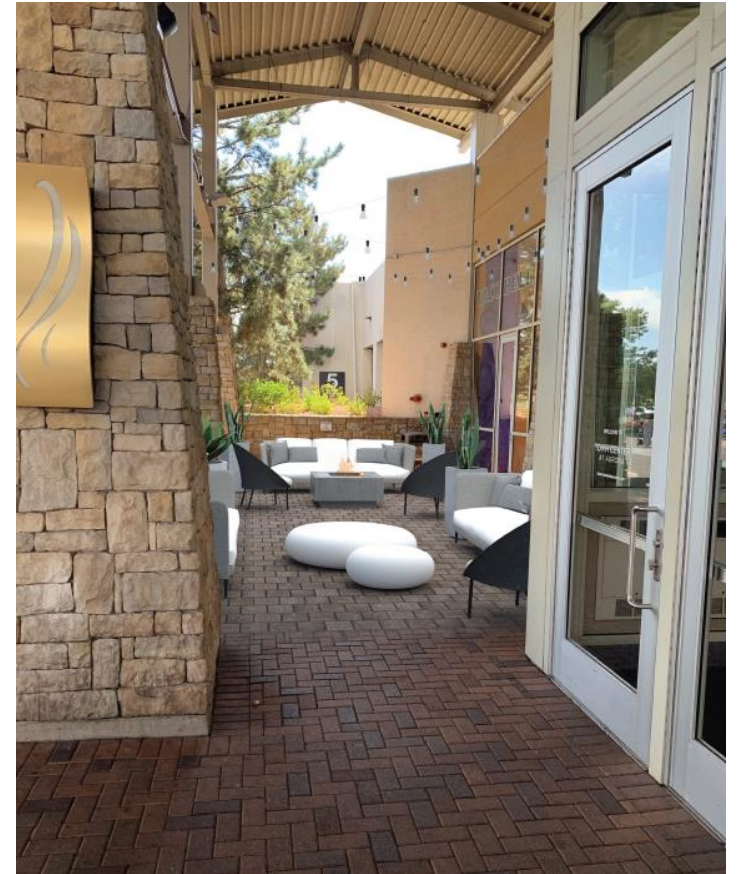
## town center at aurora | exterior entrance | considerations

Aurora, Colorado

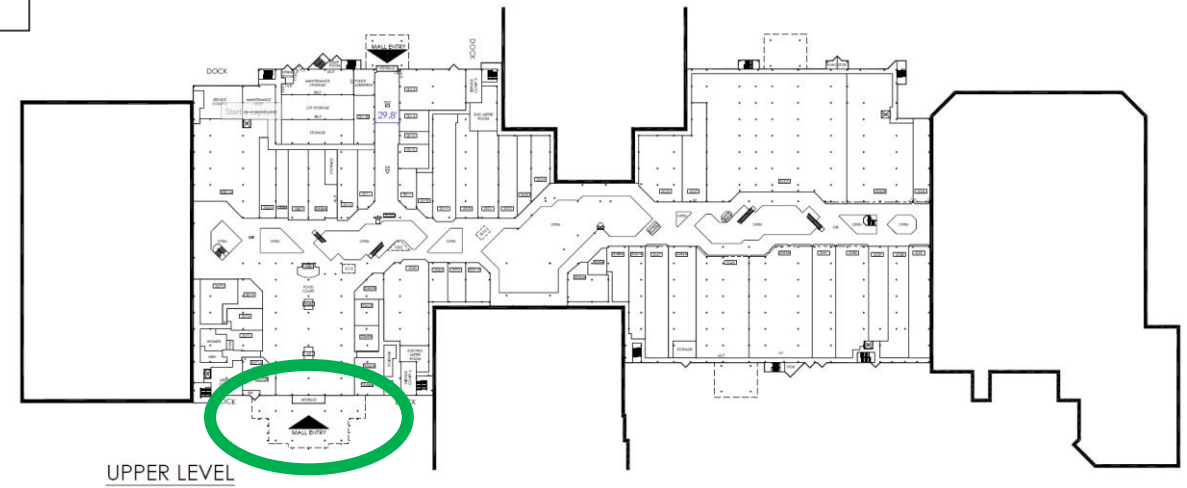
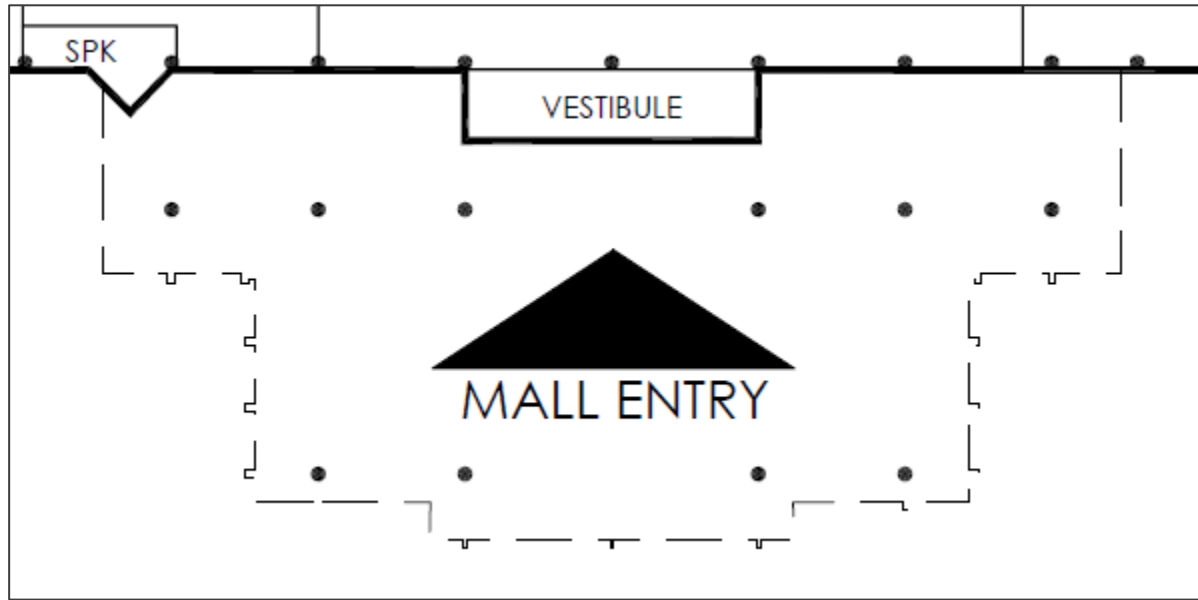
Budget: TBD

To include:

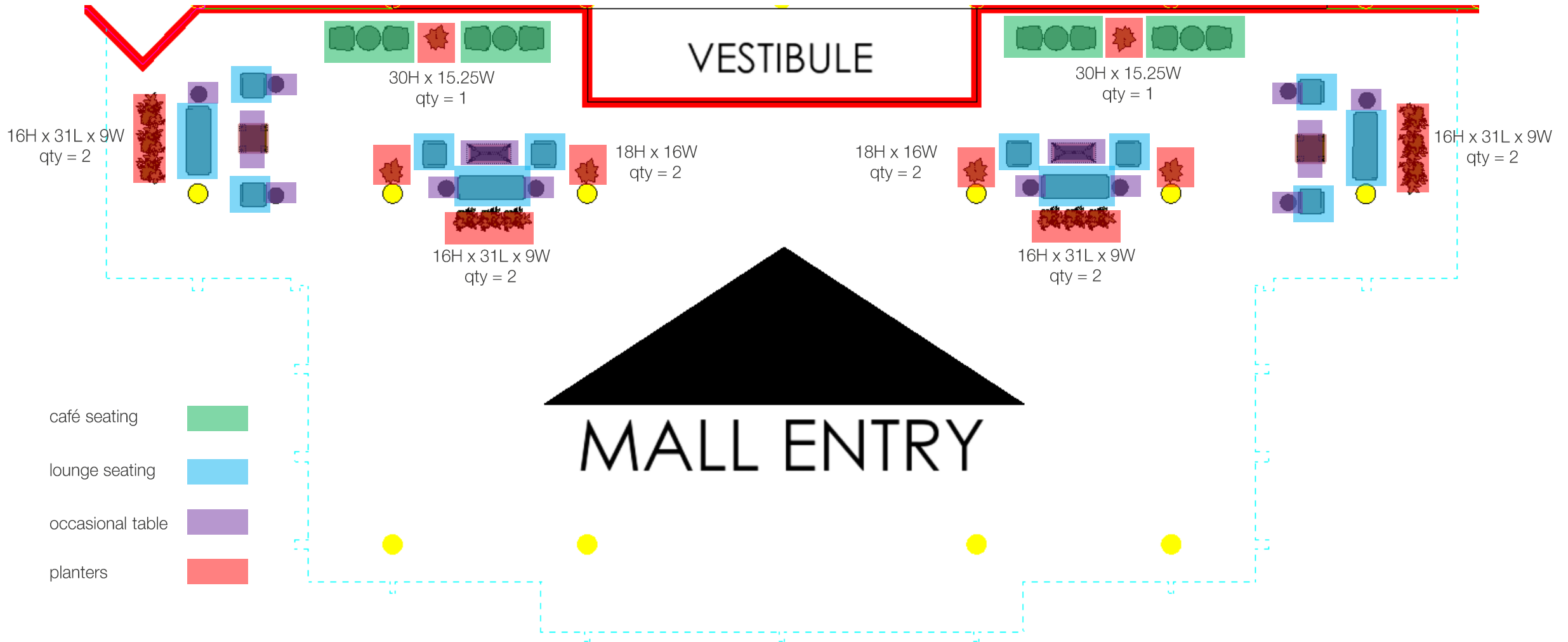
- soft seating and occasional tables
- include planters if budget allows



# town center at aurora | exterior entrance | layout



# town center at aurora | exterior entrance | proposed furniture layout



town center at aurora | exterior entrance | soft seating selection



town center at aurora | exterior entrance | soft seating | sage green color palette



QTY 4



QTY 4



QTY 8



cast oasis



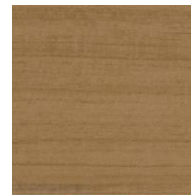
carbon



teak powdercoat aluminum



grey



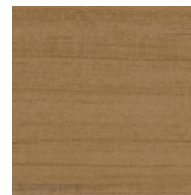
teak powdercoat aluminum



cast oasis



carbon



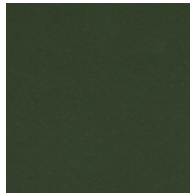
teak powdercoat aluminum



QTY 8



light grey



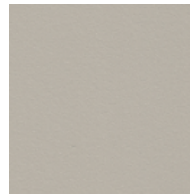
jupiter green



QTY 10



jupiter green base



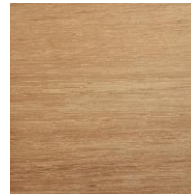
cream white top



QTY 4



matte white base



natural teak top

town center at aurora | exterior entrance | planters



high grade polyethylene planters  
black finish

sizes:

30H x 15.25W = qty 2

16H x 31L x 9W = qty 8

18H x 16W = qty 4

# thank you

## LOTH

Grandview Work Studio  
855 Grandview Ave.  
Columbus, OH 43215  
[www.lothinc.com](http://www.lothinc.com)

## Julie Voss

Leader, Emerging Workplaces  
c. 614.582.2997  
e. [jvoss@lothinc.com](mailto:jvoss@lothinc.com)

## Lorene Haimerl

Executive Vice President, Sales  
c. 614.425.8805  
o. 614.487.4143  
e. [lhaimerl@lothinc.com](mailto:lhaimerl@lothinc.com)

## Amber Blair

Workplace Advisor  
c. 419.236.9879  
e. [ablair@lothinc.com](mailto:ablair@lothinc.com)