



**Steelcase**  
Authorized Dealer



COLUMBUS  
CEO

Project:  
Town Center  
at Aurora

**WASHINGTON  
PRIME GROUP®**



## town center at aurora | considerations

\$83K Budget

5 soft seating areas

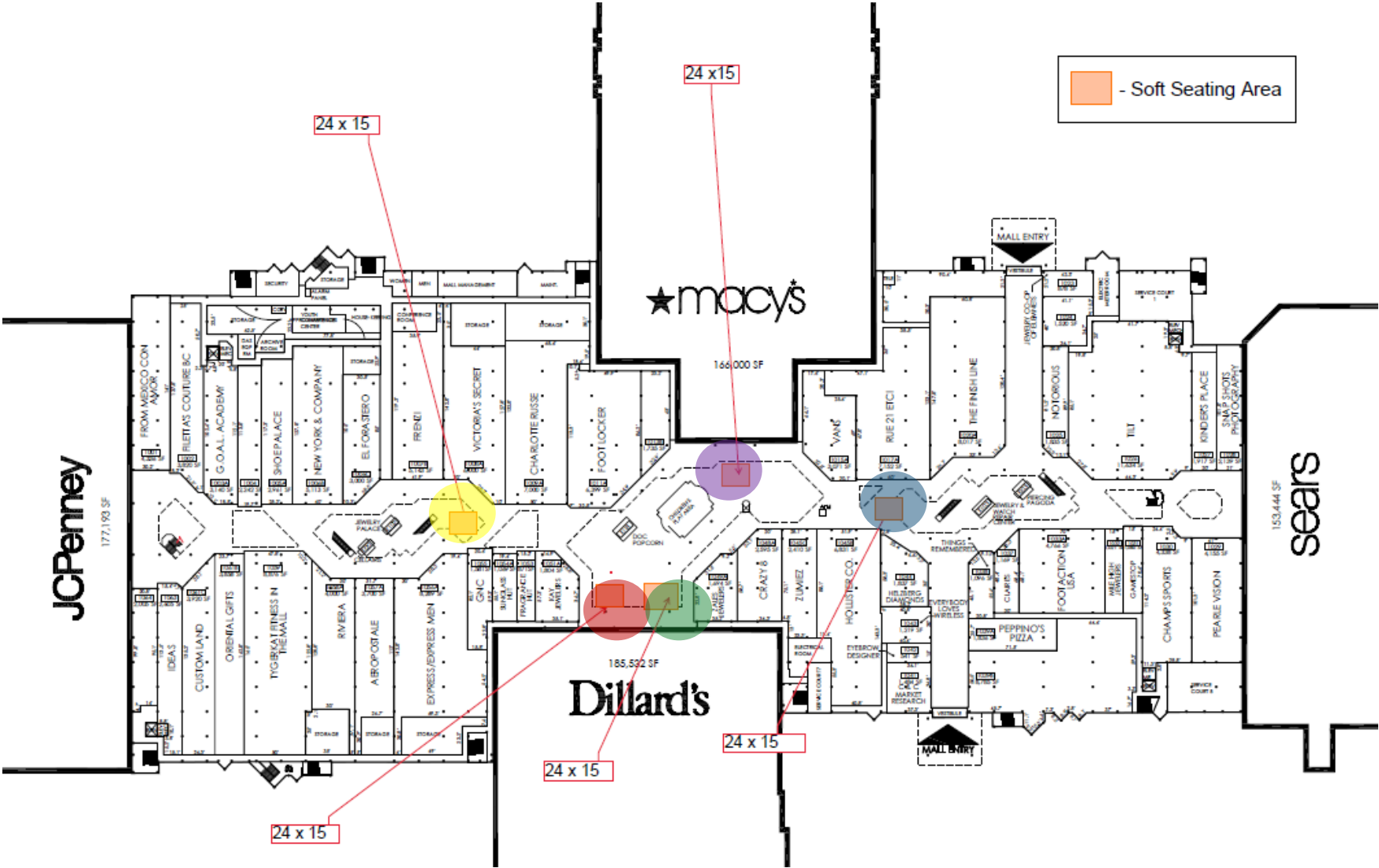
lower level only

each area is approx. 15'x24'



town center at aurora | location settings

- setting 1
- setting 2
- setting 3
- setting 4
- setting 5

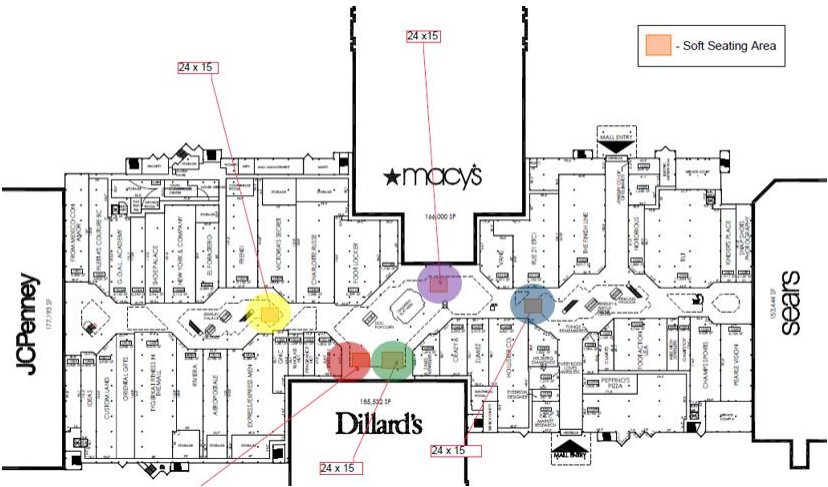




town center at aurora | color palette










town center at aurora | setting 1 | furniture and finishes | heya lounge


chair faux leather



chair surround



leather arm caps



chair legs




table laminate

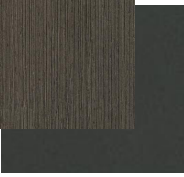

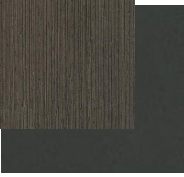


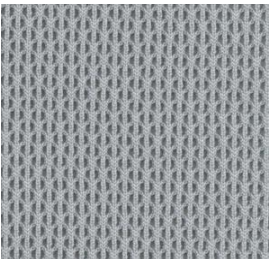
table base



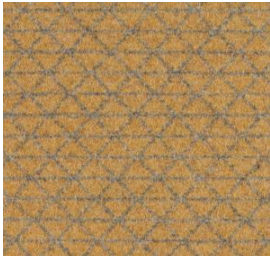




sectional fabric



accent fabric



sectional  
base



chair shell



chair cushion



chair legs

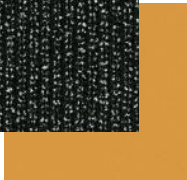


table laminate

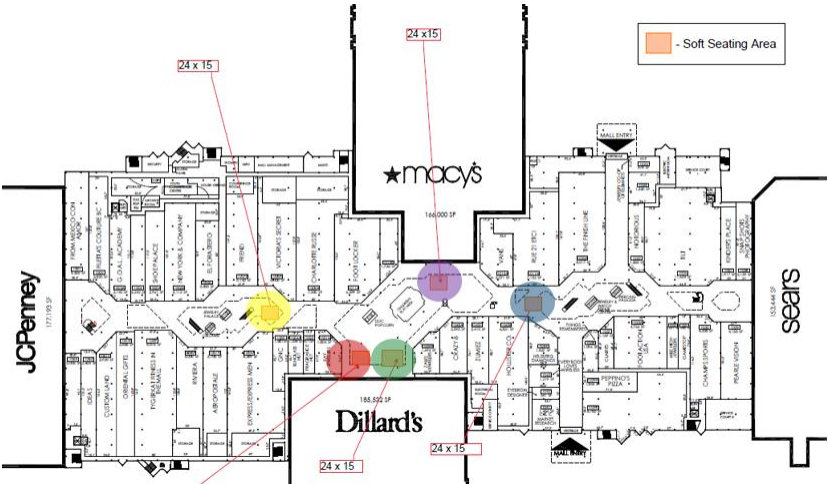


table base



**NOTE ON SEAT HEIGHTS WITH TABLE HEIGHTS REGARDING LOUNGE AND CAFÉ CHAIR MIXTURE:**  
26”H lagunitas table + 16.5” umami seat height + 18” enea chair seat height  
40”H big table + 30” seat height for enea BARSTOOL  
26”H lagunitas table + 18” enea chair seat height

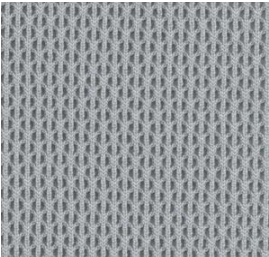








sectional fabric



accent fabric



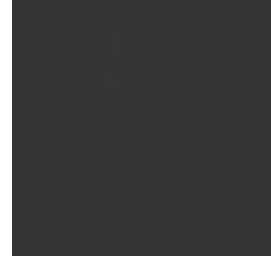
sectional  
base

table laminate





chair shell



chair cushion



chair legs



table laminate



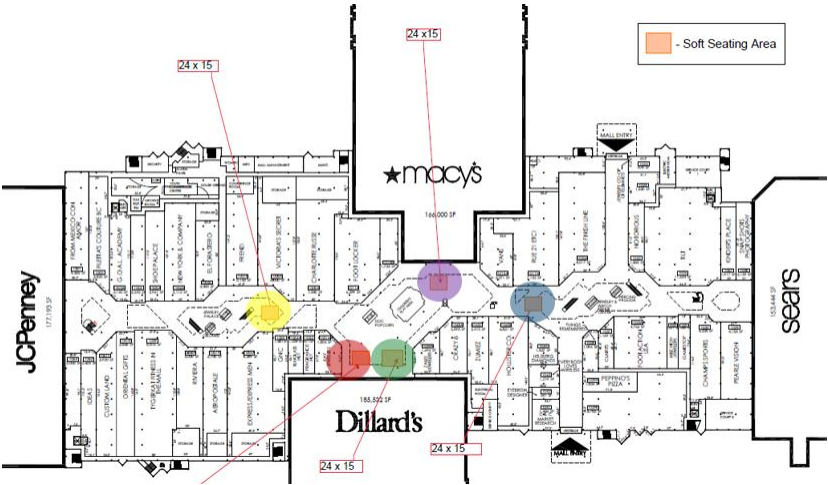
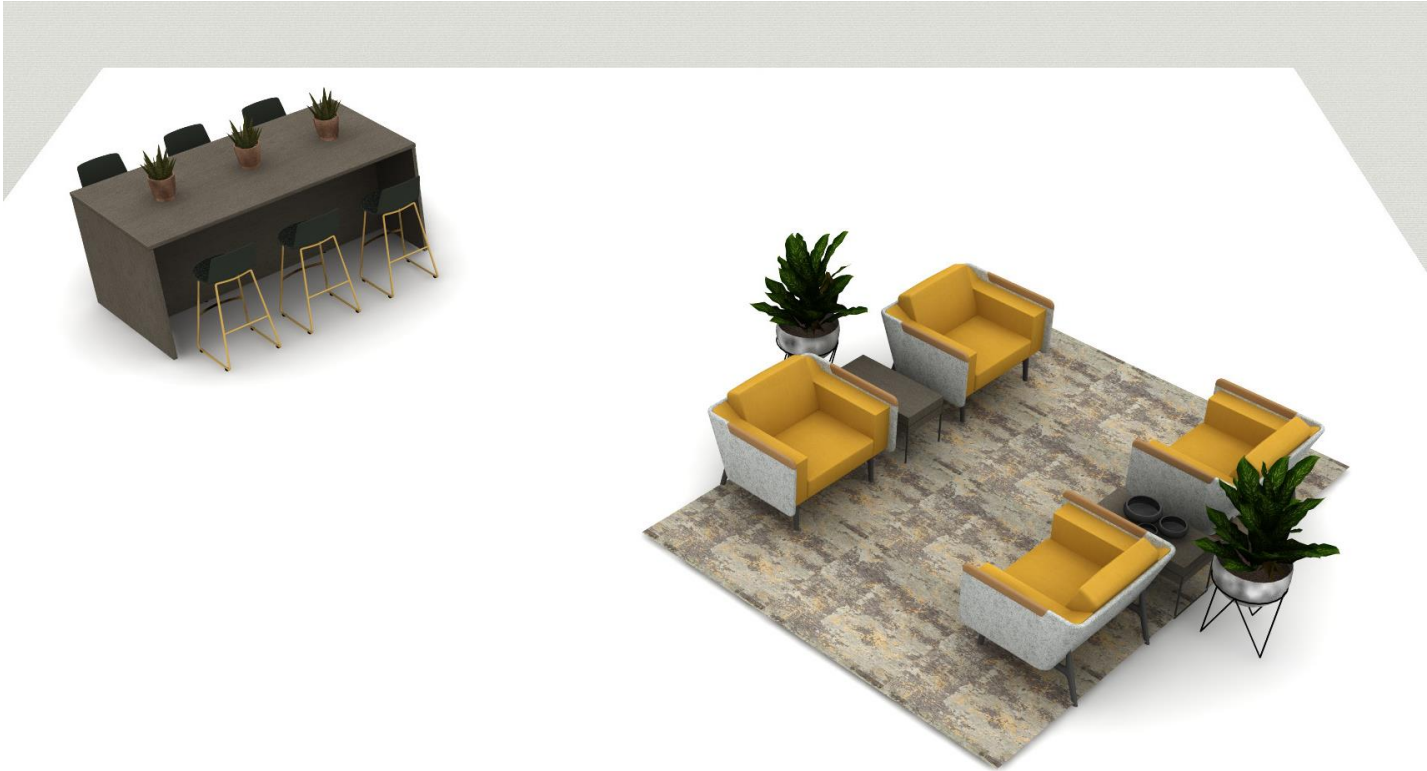
**NOTE ON SEAT HEIGHTS WITH TABLE HEIGHTS REGARDING LOUNGE AND CAFÉ CHAIR MIXTURE:**

26"H lagunitas table + 16.5" umami seat height + 18" enea chair seat height

40"H big table + 30" seat height for enea BARSTOOL

26"H lagunitas table + 18" enea chair seat height



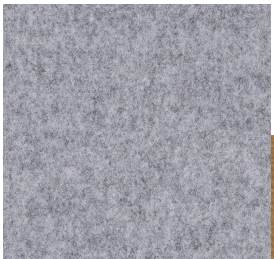




chair faux leather



chair surround



leather  
arm caps



chair legs

table laminate

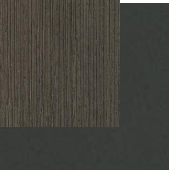
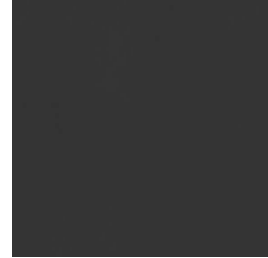


table base

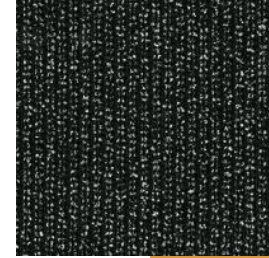




chair shell



chair cushion



chair legs



table laminate

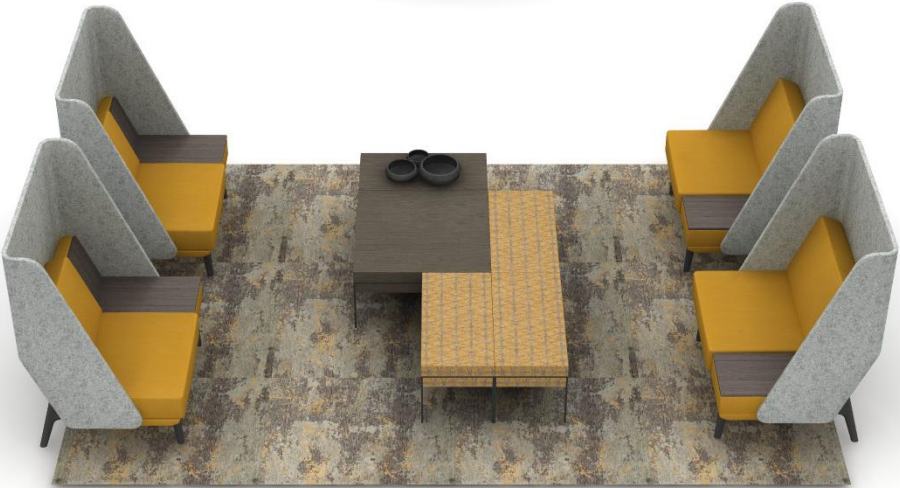
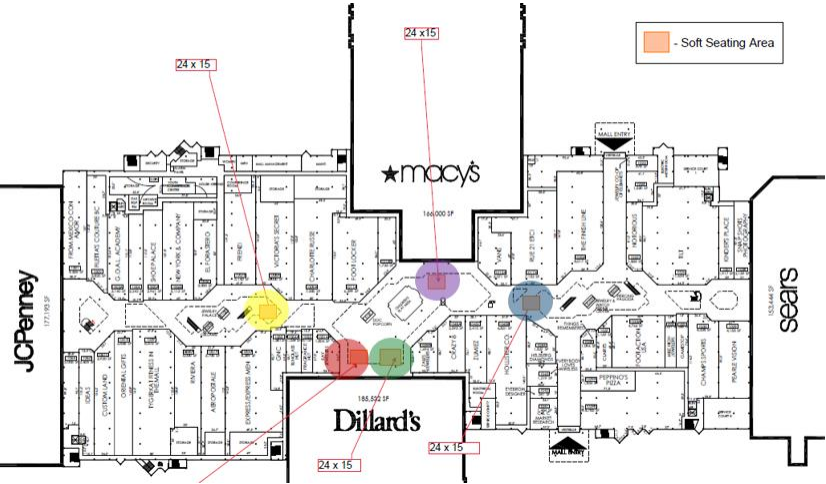


**NOTE ON SEAT HEIGHTS WITH TABLE HEIGHTS REGARDING LOUNGE AND CAFÉ CHAIR MIXTURE:**

26"H lagunitas table + 16.5" umami seat height + 18" enea chair seat height

40"H big table + 30" seat height for enea BARSTOOL

26"H lagunitas table + 18" enea chair seat height



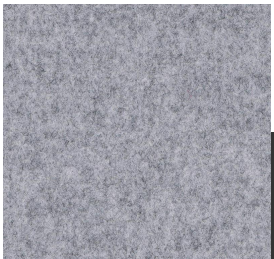




chair faux leather



chair surround



chair legs

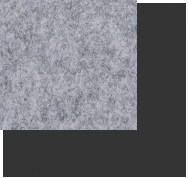
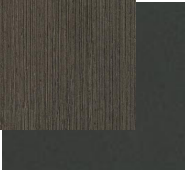


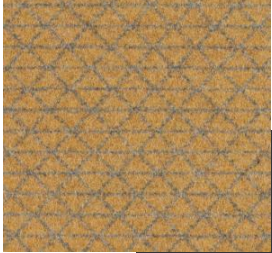
table laminate



table base



bench fabric



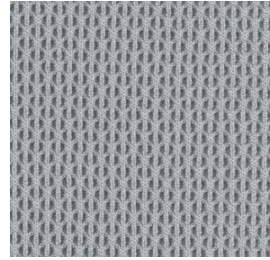
bench base



town center at aurora | setting 4 | furniture and finishes | heya high back lounge



sectional fabric



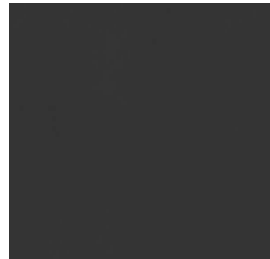
accent fabric



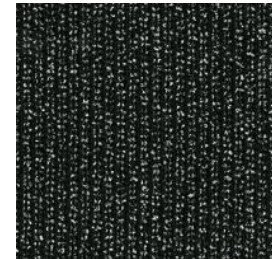
sectional  
base



chair shell



chair cushion



chair legs



table laminate



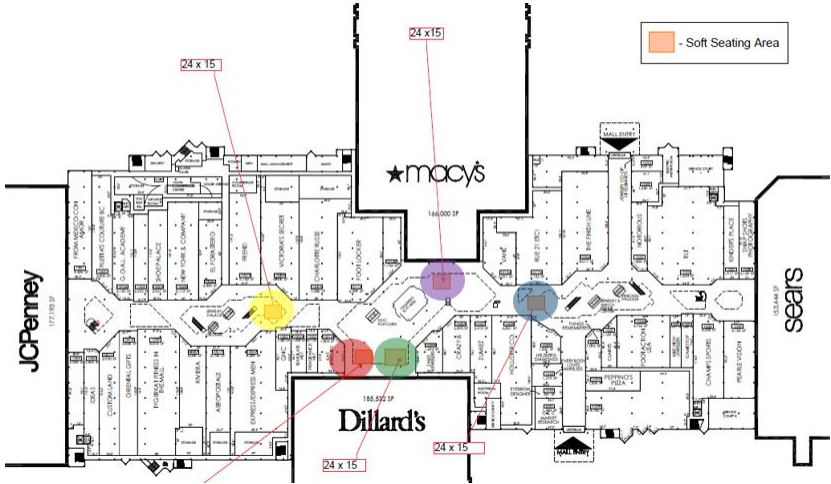
**NOTE ON SEAT HEIGHTS WITH TABLE HEIGHTS REGARDING LOUNGE AND CAFÉ CHAIR MIXTURE:**

26"H lagunitas table + 16.5" umami seat height + 18" enea chair seat height

40"H big table + 30" seat height for enea BARSTOOL

26"H lagunitas table + 18" enea chair seat height







chair shell



chair cushion



chair legs



table laminate

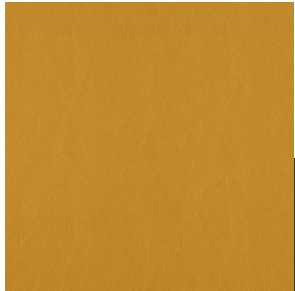


**NOTE ON SEAT HEIGHTS WITH TABLE HEIGHTS REGARDING LOUNGE AND CAFÉ CHAIR MIXTURE:**  
26”H lagunitas table + 16.5” umami seat height + 18” enea chair seat height  
40”H big table + 30” seat height for enea BARSTOOL  
26”H lagunitas table + 18” enea chair seat height



town center at aurora | fabric and finish palette

heya seat fabric  
lariat tamarind



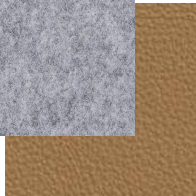
legs  
graphite



heya surround fabric  
blazer silverdale



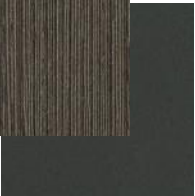
leather arm caps  
lena alba



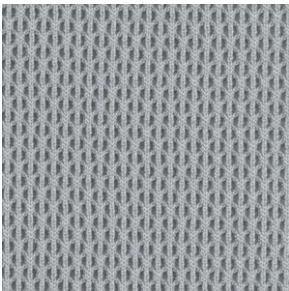
umami table laminate  
storm wenge



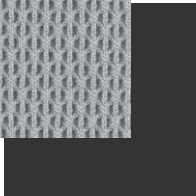
table base  
merle



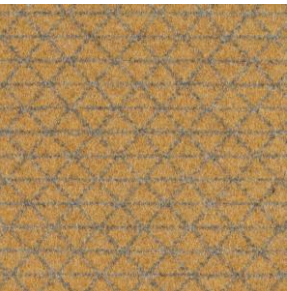
umami fabric  
cogent connect



umami base  
merle



umami fabric  
bixby micro finch



café and coffee table laminate  
storm wenge



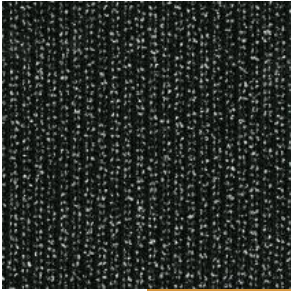
café and coffee table base  
jungle



stool seat shell  
anthracite



stool seat fabric  
new black harley



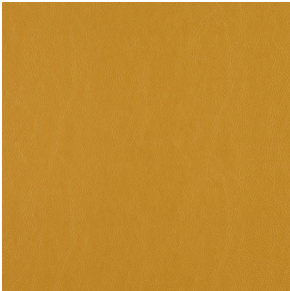
stool legs  
honey



big table laminate  
storm wenge



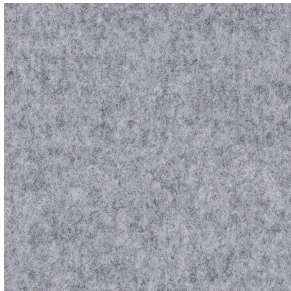
heya tall seat fabric  
lariat tamarind



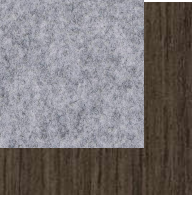
legs  
graphite



heya tall surround fabric  
blazer silverdale



console laminate  
steel



# thank you

## LOTH

Grandview Work Studio  
855 Grandview Ave.  
Columbus, OH 43215  
[www.lothinc.com](http://www.lothinc.com)

## Julie Voss

Leader, Emerging Workplaces  
c. 614.582.2997  
e. [jvoss@lothinc.com](mailto:jvoss@lothinc.com)

## Lorene Haimerl

Executive Vice President, Sales  
c. 614.425.8805  
o. 614.487.4143  
e. [lhaimerl@lothinc.com](mailto:lhaimerl@lothinc.com)

## Amber Blair

Workplace Advisor  
c. 419.236.9879  
e. [ablair@lothinc.com](mailto:ablair@lothinc.com)